

Route 91 Music Festival Shooting Reflections



Route 91 Reflections

- 3 Day Country Music Festival, shooting occurred on the final night
- Small outdoor venue (15 acres)
- Smallish crowd—22,000 is not large by Vegas criteria



Route 91 Reflections

- The shooter was in the Mandalay Bay Hotel, on the 32nd floor, shooting down and across the street in to the Las Vegas Village festival venue
- UMC is approximately 6.8 miles from the Mandalay Bay.
 - Level I Trauma Center
- Sunrise Hospital is approximately 6.6 miles from the Mandalay Bay.
 - Level II Trauma Center
- Desert Springs Hospital is approximately 4.5 miles from the Mandalay Bay.
 - No Trauma Designation

Google Earth



Mandalay Bay Hotel
Shots were fired
from the 32nd floor

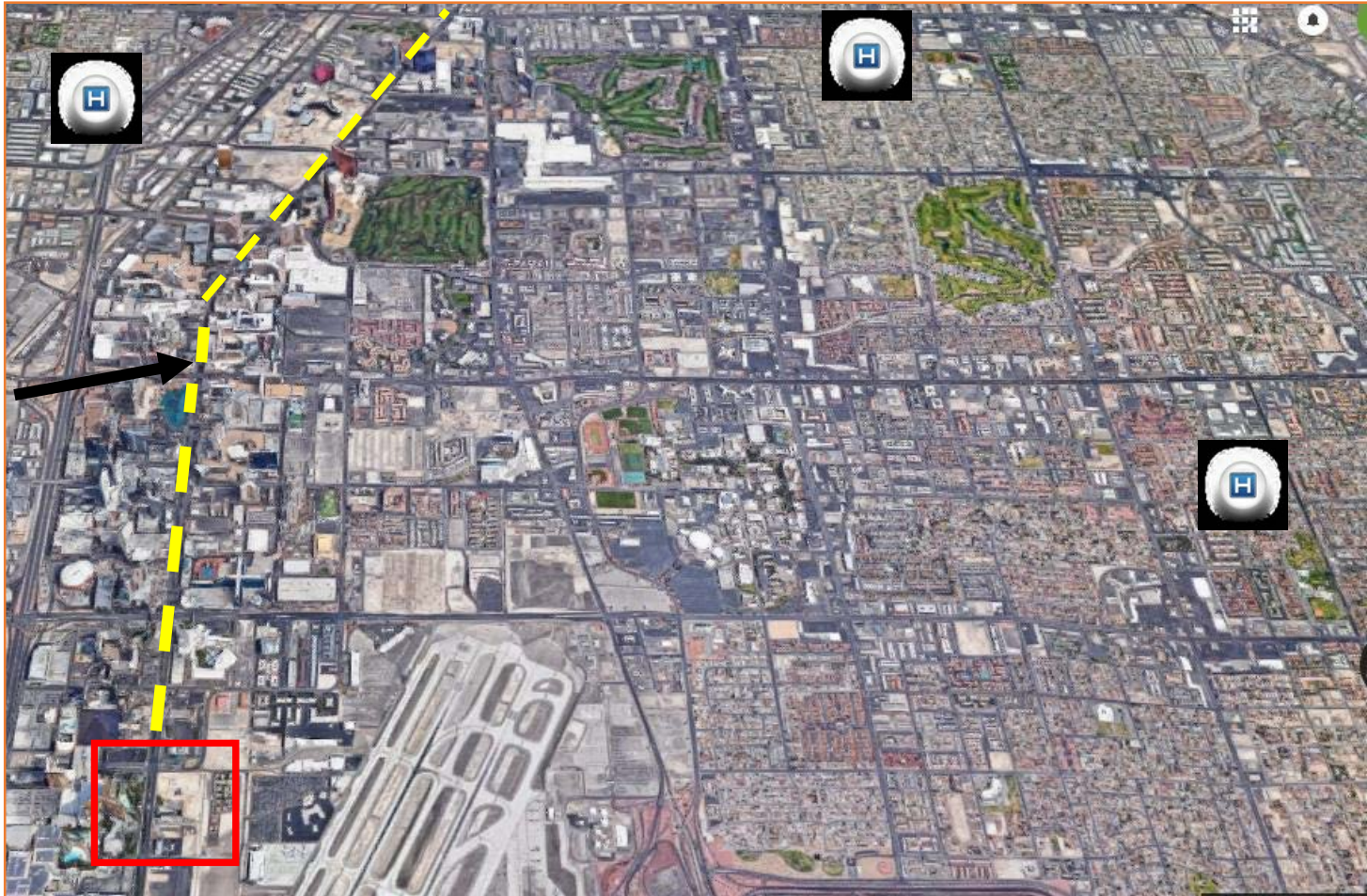
Music festival

Luxor

Las Vegas Blvd

Sunrise Hospital
4.8 miles

UMC
6 miles



Desert
Springs
Hospital
4.4 miles

Festival Grounds



Route 91 Reflections

Desert Springs Hospital Medical Center

- Part of the Valley Health System, 6 hospitals in the valley.
- 293 Bed Acute Care Hospital
 - 36 bed Emergency Department
 - 4300 visits/month approx.
 - No pediatric services
 - No OB/GYN services
 - No trauma designation.



Route 91 Reflections

Code Lockdown-to protect the facility from an outside threat.

- Hospital placed on lockdown at 2233 due to “shooter on the strip”.
- No official information regarding the event was initially available.
- Injured and frightened will find ways in



Route 91 Reflections

Code Triage—an alteration in daily operations

Code Triage called at 2320

Leadership team came to the hospital

Staff heard what had happened and came in

Security perimeter was established



Route 91 Reflections

Medical Surge-Initial Response

“No Notice” Mass Casualty Event

The majority of patients used their smart phones to locate the nearest hospital.

Paradigm Shift in MCI response at hospitals



Route 91 Reflections

- Communication
- Security
- Resources
- Incident Command



Route 91 Reflections

Triage/Waiting Room

1. Patient Surge
2. HER
3. Triage Tags
4. Victims/non-victims
5. Patient locations



Route 91 Reflections

Emergency Department

Multiple waves of patients

Wave 1....

Wave 2....

Wave 3....

Wave 4....



Route 91 Reflections

Between 2215 and 0430

103 patients

20 Admissions

3 Surgeries

18 Transfers

3 Critical trauma transfers-

1-to UMC, 2-SRD Sienna

4 DOA

This hospital participates in the Medicaid Program.

Insurance pending care in the facility
and compliance of
Mount Springs Hospital Medical Center
This is independent of the
compliance of other facilities.

From Carlos Santana



Route 91 Reflections

- Community response was overwhelming
- Donation management became important
- Psychological assistance was provided by VA and NGO agencies
- Observing and encouraging employees to seek assistance



THE UNIVERSITY OF TEXAS AT AUSTIN
SCHOOL OF BUSINESS
BUSINESS CENTER
78797

Route 91 Reflections

EVERYONE wants/needs information

Law Enforcement

Media

Healthcare

Southern Nevada Healthcare Coalition, Medical Surge Area
Command

under ESF 8 in the EOC



get well
SOON

Hopefully this
will bring a smile
to you today.
Las Vegas loves and
supports you.









VEGAS STRONG



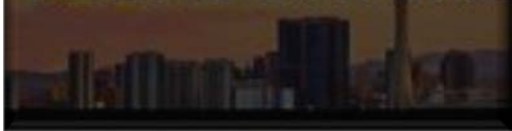
VEGAS STRONG



VEGAS STRONG



VEGAS STRONG

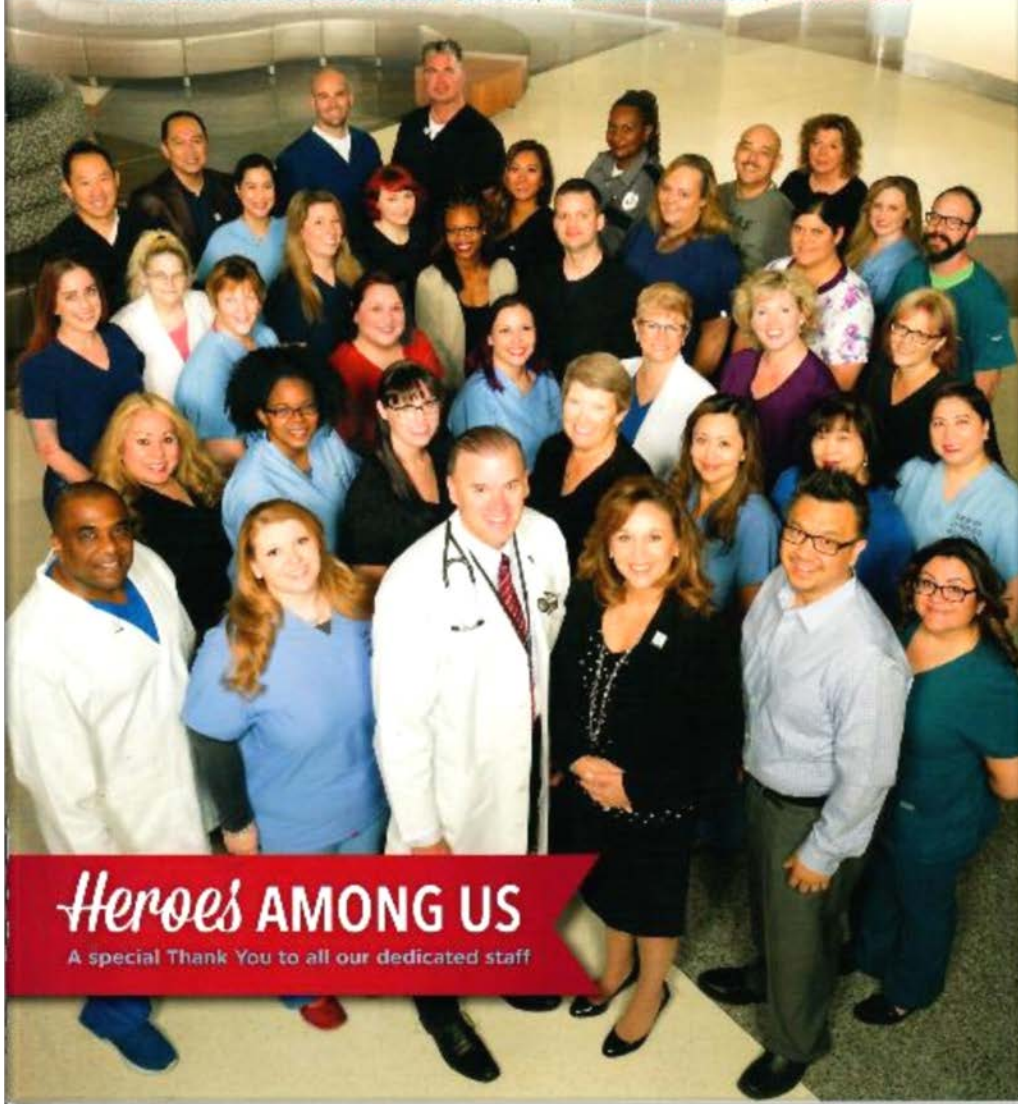


Vegas Strong



UHS news

A Newsletter for Universal Health Services, Inc. and Its Affiliates | WINTER 2018



Heroes AMONG US

A special Thank You to all our dedicated staff

Questions?

Karen S. Donnahie, RN, MHA

Emergency Preparedness Coordinator

Desert Springs Hospital

Karen.Donnahie@uhsinc.com