

Enhance Compliance and Power Your Initiatives for Health Equity and Access

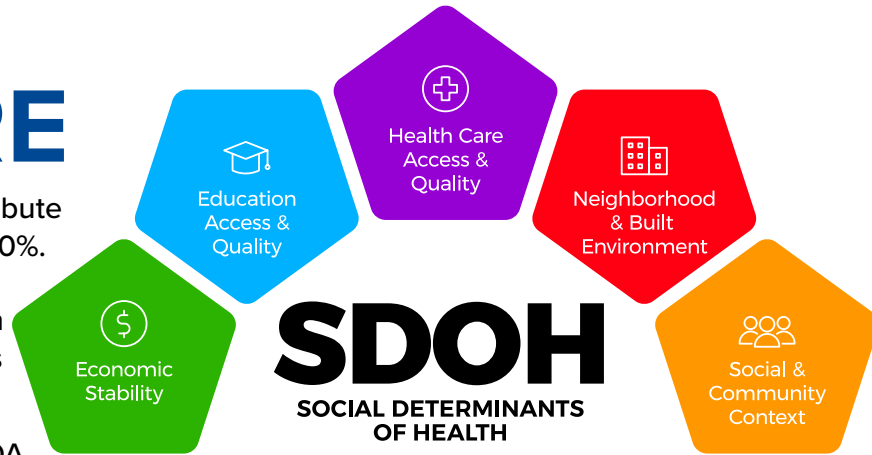
Let NJHA Healthcare Business Solutions Assist

Introducing...

SDoH ASSURE

Social Determinants of Health (SDoH) can contribute to an individual's overall health by as much as 80%. SDoH include factors such as literacy, housing, transportation, nutrition or safety issues and can be identified through the assignment of Z codes ranging from Z55-Z65.

The Joint Commission (LD.04.03.08), CMS, NCQA and other regulators have adopted requirements for healthcare providers to address health disparities. To achieve compliance, you must capture, analyze and benchmark your data.



How the NJHA team of experts can assist...

- Validate your Z code capture with our coding experts to identify gaps or opportunities
- Establish baseline Z code capture via a UB data analysis, and stratify your data by Race, Age, Sex, County
- Benchmark your Z code capture internally and externally with other N.J. facilities
- Increase awareness through virtual education programs designed both for Coders and Clinical Teams
- Establish a system for consistent tracking and trending SDOH data capture to help compliance with regulatory requirements
- Participate in our SDOH Assure Z Code Team to share and learn best practices

Here's an example of what SDOH Assure can do for your organization to benchmark and track Z code capture:

Z CODE CAPTURE BY AGE			
Patient Age	All Z Codes Reported		
	Goal Capture Rate	Statewide Avg.	Your Facility
0-17	90%	0.54%	0.43%
18-24	90%	1.30%	1.65%
25-34	90%	2.00%	2.25%
35-44	90%	2.30%	2.65%
45-54	90%	2.20%	2.40%
55-64	90%	2.10%	1.26%
65-74	90%	0.94%	0.63%
75-84	90%	0.65%	0.55%
85+	90%	0.73%	0.49%

Z CODE CAPTURE BY RACE			
Patient Race	All Z Codes Reported		
	Goal Capture Rate	Statewide Avg.	Your Facility
1) White	90%	1.30%	1.35%
2) Hispanic	90%	1.20%	0.90%
3) Black	90%	2.50%	2.60%
4) Asian	90%	0.70%	0.60%

Call us for additional information:
609.936.2200