

# Highlighting Tool 1: Data Analysis



This 15 point data analysis will help you look closely at your current readmission rate by specific population. NJHA may be able to help you acquire this Medicaid specific data, or if you are a health system you will have your own system-wide strategy. But remember if you are a health system, to develop a customized approach for each hospital and focus on your target population.

Key 15 points are included in Amy Boutwell's Pre-Coaching webinar slides which were sent out to all webinar participants. Please keep them for reference. In addition, do check out the [Tool 1 Data Analysis Excel Spreadsheet](#). This includes all the instructions and details for your hospital data analysis. It even includes examples for your reference.

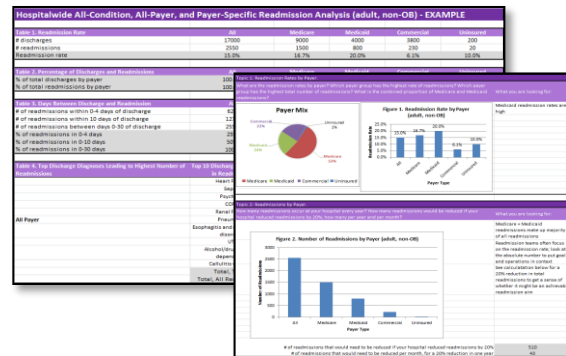


Image from Dr. Boutwell's Webinar Presentation