

NEW JERSEY ACUTE CARE HOSPITAL

MENTAL HEALTH AND SUBSTANCE USE DISORDER VOLUME REPORT

A Compilation of Uniform
Billing Information

Trending: 2012 – 2016

This report is intended to help providers, policy makers and leaders in the mental health and substance use disorders community identify opportunities for improvement and strategically plan for services based on need.



TABLE OF CONTENTS

3 Introduction

5 Spotlight Reports

Distribution by Age and Position of
Substance Use Disorder and Suicidality
Diagnosis Codes

Distribution by Payer Mix and Position of
Substance Use Disorder and Suicidality
Diagnosis Code

Inpatient and Emergency Department

Statewide and County 2012 - 2016

8 Distribution by Age

Distribution by Payer Mix

Emergency Department
Mental Health or Substance Use Disorder
Diagnosis Codes in *Any* Position

Statewide and County 2012 - 2016

31 Distribution by Age

Distribution by Payer Mix

Emergency Department
Mental Health or Substance Use Disorder
Diagnosis Codes in *Primary* Position

Statewide and County 2012 - 2016

54 Distribution by Age

Distribution by Payer Mix

Inpatient Admission
Mental Health or Substance Use Disorder
Diagnosis Codes in *Primary* or *Any* Position

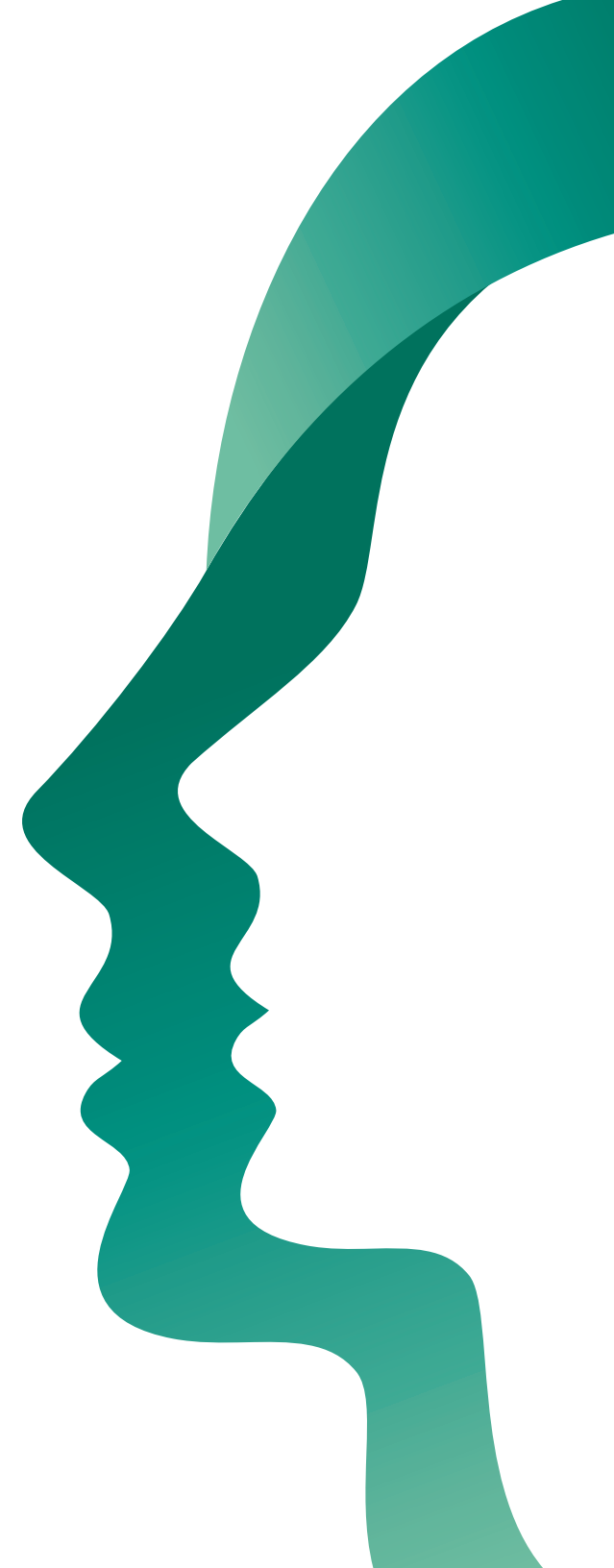
Statewide and County 2012 - 2016

INTRODUCTION

An optimal healthcare system should provide the right care, at the right time, in the right setting. Never has that been more true than in the care and treatment of New Jersey residents with mental health and substance use disorder needs. There is widespread agreement across our state that more needs to be done to improve access to needed inpatient and community-based mental health and substance use services for all ages, in all counties, with all types of insurance status.

This report, now in its 5th year, provides data that suggests much more work remains to achieve those goals. Hospital emergency departments are New Jersey's always-there resource for people with emergent healthcare needs, including those confronting issues of mental illness or substance use disorder. The data contained here reflects the growing use of emergency departments by this population, and it casts a light on access barriers to other care settings for those with mental illness or substance use disorders. Our goal is to provide data to support a statewide dialogue on creating a system that provides high-quality, efficient and accessible healthcare services for those who seek healing for mental illness and substance use disorders.

Due to low volume counts, certain reports were unable to be separated by age and/or payer levels.



A GROWING NEED



In New Jersey's Emergency Rooms:

The number of visits with a mental health or substance use disorder diagnosis as a primary or secondary diagnosis increased from **521,518** in 2012 to **602,375** in 2016, an increase of **15.5** percent.

Mental health or substance use disorder visits as either the primary or secondary diagnosis accounted for just over **19** percent of all ED volume, compared to **16.7** percent in 2012.

Medicare and Medicaid HMO and fee-for-service all saw significant increases in beneficiaries accessing mental health and substance use disorder services from 2012 to 2016.



In New Jersey's acute care hospital beds:

303,590 patients admitted to an acute care hospital had a primary or secondary diagnosis of mental health or substance use disorder.

Patients with a primary diagnosis of mental health or substance use disorder accounted for more than **7** percent of all inpatient admissions, while patients with a diagnosis as primary or secondary accounted for more than **32** percent of total inpatient volume.



In New Jersey's provider network:

1,608 licensed psychiatrists are practicing in New Jersey: **1,448** in general psychiatry, **83** in child psychiatry and **77** in a psychiatry subspecialty.

Of the total licensed psychiatrists, **1,000** self-reported that they are not accepting new Medicaid patients (**62.2** percent).

Of the child psychiatrists, **51** of the **83** (**61.4** percent) are not accepting new Medicaid patients.





Spotlight Reports

**Distribution by Age and Position
of Substance Use Disorder and
Suicidality Diagnosis Codes**

**Distribution by Payer Mix and
Position of Substance Use
Disorder and Suicidality
Diagnosis Code**

**Inpatient and Emergency
Department**

*Statewide and County
2012 - 2016*



Spotlight Report

Substance Use Disorder

Distribution of Substance Use Disorder Patients by Age and Position of Diagnosis Code

<u>Age</u>	<u>Inpatient</u>		<u>Emergency Department</u>	
	<u>SUD DX in Primary Position</u>	<u>SUD DX in Any Position</u>	<u>SUD DX in Primary Position</u>	<u>SUD DX in Any Position</u>
0 - 12 years (Child)		38	22	128
13 - 21 years (Adolescent)		5,085	5,681	24,162
22 - 54 years (Adult)		84,208	50,133	255,647
55 years + (Geriatric)		54,837	14,488	75,018
Total	21,541	144,168	70,324	354,955

Distribution of Substance Use Disorder Patients by Payer Mix and Position of Diagnosis Code

<u>Payer Mix</u>	<u>Inpatient</u>		<u>Emergency Department</u>	
	<u>SUD DX in Primary Position</u>	<u>SUD DX in Any Position</u>	<u>SUD DX in Primary Position</u>	<u>SUD DX in Any Position</u>
Medicare - HMO & FFS	2,211	38,983	6,803	50,661
Medicaid - HMO & FFS	13,274	52,068	24,944	119,812
Blue Cross / Commercial	3,566	37,871	16,793	105,809
Charity Care / Uninsured	2,282	11,535	20,433	65,700
Other	208	3,711	1,351	12,973
Total	21,541	144,168	70,324	354,955

Substance Use Disorder Diagnosis Codes sourced from: <https://www.cms.gov/Medicare/Coding/ICD10/index.html>

Source: 2016 UB Data



Spotlight Report

Suicidality

Distribution of Suicidality Patients by Age and Position of Diagnosis Code

<u>Age</u>	<u>Inpatient</u>		<u>Emergency Department</u>	
	<u>Suicidality DX in Primary Position</u>	<u>Suicidality DX in Any Position</u>	<u>Suicidality DX in Primary Position</u>	<u>Suicidality DX in Any Position</u>
0 - 12 years (Child)	13	267	324	698
13 - 21 years (Adolescent)	476	2,760	1,940	4,243
22 - 54 years (Adult)	1,416	11,168	3,734	9,331
55 years + (Geriatric)	523	3,259	764	2,238
Total	2,428	17,454	6,762	16,510

Distribution of Suicidality Patients by Payer Mix and Position of Diagnosis Code

<u>Payer Mix</u>	<u>Inpatient</u>		<u>Emergency Department</u>	
	<u>Suicidality DX in Primary Position</u>	<u>Suicidality DX in Any Position</u>	<u>Suicidality DX in Primary Position</u>	<u>Suicidality DX in Any Position</u>
Medicare - HMO & FFS	486	3,126	822	2,299
Medicaid - HMO & FFS	708	8,487	2,162	5,739
Blue Cross / Commercial	987	4,304	2,863	6,210
Charity Care / Uninsured	179	1,293	809	1,997
Other	68	244	106	265
Total	2,428	17,454	6,762	16,510

Suicidality Diagnosis Codes sourced from: <https://www.cms.gov/Medicare/Coding/ICD10/index.html>

Source: 2016 UB Data





Distribution by Age

Distribution by Payer Mix

**Emergency Department
Mental Health or Substance
Use Disorder Diagnosis Codes
in *Any* Position**

*Statewide and County
2012 - 2016*



Statewide

Distribution of Behavioral Health Patients in the Emergency Department by Age Behavioral Health Diagnosis Code in Any Position

<u>Age</u>	<u>Calendar Year</u> <u>2012</u>	<u>Calendar Year</u> <u>2013</u>	<u>Calendar Year</u> <u>2014</u>	<u>Calendar Year</u> <u>2015</u>	<u>Calendar Year</u> <u>2016</u>
0 - 12 years (Child)	13,073	12,893	13,199	14,153	14,349
13 - 21 years (Adolescent)	59,170	56,639	56,582	58,151	56,638
22 - 54 years (Adult)	331,827	321,209	328,969	360,698	364,633
55 years + (Geriatric)	117,448	124,440	135,767	155,303	166,755
Total	521,518	515,181	534,517	588,305	602,375
Total Emergency Department Visits	3,122,698	3,050,163	3,087,843	3,205,580	3,161,242
% BH Volume of Total Volume	16.70%	16.89%	17.31%	18.35%	19.06%

Distribution of Behavioral Health Patients in the Emergency Department by Payer Mix Behavioral Health Diagnosis Code in Any Position

<u>Payer Mix</u>	<u>Calendar Year</u> <u>2012</u>	<u>Calendar Year</u> <u>2013</u>	<u>Calendar Year</u> <u>2014</u>	<u>Calendar Year</u> <u>2015</u>	<u>Calendar Year</u> <u>2016</u>
Medicare - HMO & FFS	103,037	105,129	114,047	127,925	134,941
Medicaid - HMO & FFS	75,748	74,019	129,930	169,204	178,458
Blue Cross / Commercial	161,371	156,521	167,370	186,989	186,463
Charity Care / Uninsured	165,932	163,205	105,342	83,943	81,793
Other	15,430	16,307	17,828	20,244	20,720
Total	521,518	515,181	534,517	588,305	602,375

2016 Behavioral Health Diagnosis Codes sourced from: <https://www.cms.gov/Medicare/Coding/ICD10/index.html>

2012 - 2015 Behavioral Health Diagnosis Codes sourced from: <https://www.cms.gov/Medicare/Coding/ICD9ProviderDiagnosticCodes/codes.html>

Source: 2012 - 2016 UB Data

Atlantic County

Distribution of Behavioral Health Patients in the Emergency Department by Age Behavioral Health Diagnosis Code in Any Position

<u>Age</u>	<u>Calendar Year</u> <u>2012</u>	<u>Calendar Year</u> <u>2013</u>	<u>Calendar Year</u> <u>2014</u>	<u>Calendar Year</u> <u>2015</u>	<u>Calendar Year</u> <u>2016</u>
0 - 12 years (Child)	600	531	513	542	634
13 - 21 years (Adolescent)	3,689	3,419	3,000	3,216	3,266
22 - 54 years (Adult)	24,151	23,428	20,383	23,995	25,994
55 years + (Geriatric)	7,300	7,384	6,494	7,806	8,755
Total	35,740	34,762	30,390	35,559	38,649
Total Emergency Department Visits	147,773	146,466	145,208	147,195	147,069
% BH Volume of Total Volume	24.19%	23.73%	20.93%	24.16%	26.28%

Distribution of Behavioral Health Patients in the Emergency Department by Payer Mix Behavioral Health Diagnosis Code in Any Position

<u>Payer Mix</u>	<u>Calendar Year</u> <u>2012</u>	<u>Calendar Year</u> <u>2013</u>	<u>Calendar Year</u> <u>2014</u>	<u>Calendar Year</u> <u>2015</u>	<u>Calendar Year</u> <u>2016</u>
Medicare - HMO & FFS	6,272	5,872	4,921	6,327	6,996
Medicaid - HMO & FFS	8,133	7,957	12,796	17,919	19,765
Blue Cross / Commercial	7,459	6,952	5,850	5,485	5,746
Charity Care / Uninsured	13,179	13,279	6,172	4,938	5,131
Other	697	702	651	890	1,011
Total	35,740	34,762	30,390	35,559	38,649

2016 Behavioral Health Diagnosis Codes sourced from: <https://www.cms.gov/Medicare/Coding/ICD10/index.html>

2012 - 2015 Behavioral Health Diagnosis Codes sourced from: <https://www.cms.gov/Medicare/Coding/ICD9ProviderDiagnosticCodes/codes.html>

Source: 2012 - 2016 UB Data

Bergen County

Distribution of Behavioral Health Patients in the Emergency Department by Age Behavioral Health Diagnosis Code in Any Position

<u>Age</u>	<u>Calendar Year</u> <u>2012</u>	<u>Calendar Year</u> <u>2013</u>	<u>Calendar Year</u> <u>2014</u>	<u>Calendar Year</u> <u>2015</u>	<u>Calendar Year</u> <u>2016</u>
0 - 12 years (Child)	1,373	1,383	1,238	1,373	1,124
13 - 21 years (Adolescent)	4,536	4,464	4,269	4,304	3,720
22 - 54 years (Adult)	23,200	22,600	19,656	22,094	20,370
55 years + (Geriatric)	11,077	12,571	12,490	13,290	13,401
Total	40,186	41,018	37,653	41,061	38,615
Total Emergency Department Visits	239,556	234,579	235,011	256,870	262,656
% BH Volume of Total Volume	16.78%	17.49%	16.02%	15.99%	14.70%

Distribution of Behavioral Health Patients in the Emergency Department by Payer Mix Behavioral Health Diagnosis Code in Any Position

<u>Payer Mix</u>	<u>Calendar Year</u> <u>2012</u>	<u>Calendar Year</u> <u>2013</u>	<u>Calendar Year</u> <u>2014</u>	<u>Calendar Year</u> <u>2015</u>	<u>Calendar Year</u> <u>2016</u>
Medicare - HMO & FFS	8,458	9,540	9,456	9,820	9,803
Medicaid - HMO & FFS	3,985	3,186	4,572	7,103	6,757
Blue Cross / Commercial	14,884	14,570	14,386	14,643	13,304
Charity Care / Uninsured	11,756	11,430	6,598	5,471	5,061
Other	1,103	2,292	2,641	4,024	3,690
Total	40,186	41,018	37,653	41,061	38,615

2016 Behavioral Health Diagnosis Codes sourced from: <https://www.cms.gov/Medicare/Coding/ICD10/index.html>

2012 - 2015 Behavioral Health Diagnosis Codes sourced from: <https://www.cms.gov/Medicare/Coding/ICD9ProviderDiagnosticCodes/codes.html>

Source: 2012 - 2016 UB Data

Burlington County

Distribution of Behavioral Health Patients in the Emergency Department by Age Behavioral Health Diagnosis Code in Any Position

<u>Age</u>	<u>Calendar Year</u> <u>2012</u>	<u>Calendar Year</u> <u>2013</u>	<u>Calendar Year</u> <u>2014</u>	<u>Calendar Year</u> <u>2015</u>	<u>Calendar Year</u> <u>2016</u>
0 - 12 years (Child)	394	411	435	435	468
13 - 21 years (Adolescent)	1,830	1,708	1,756	1,911	2,092
22 - 54 years (Adult)	9,863	8,737	8,902	9,132	11,929
55 years + (Geriatric)	5,441	5,351	6,379	6,363	7,597
Total	17,528	16,207	17,472	17,841	22,086
Total Emergency Department Visits	132,843	128,047	127,192	125,424	136,770
% BH Volume of Total Volume	13.19%	12.66%	13.74%	14.22%	16.15%

Distribution of Behavioral Health Patients in the Emergency Department by Payer Mix Behavioral Health Diagnosis Code in Any Position

<u>Payer Mix</u>	<u>Calendar Year</u> <u>2012</u>	<u>Calendar Year</u> <u>2013</u>	<u>Calendar Year</u> <u>2014</u>	<u>Calendar Year</u> <u>2015</u>	<u>Calendar Year</u> <u>2016</u>
Medicare - HMO & FFS	6,281	6,001	6,800	6,733	7,657
Medicaid - HMO & FFS	1,564	1,430	2,794	3,213	3,632
Blue Cross / Commercial	5,185	4,761	5,398	5,898	7,762
Charity Care / Uninsured	3,244	3,008	1,498	951	1,511
Other	1,254	1,007	982	1,046	1,524
Total	17,528	16,207	17,472	17,841	22,086

2016 Behavioral Health Diagnosis Codes sourced from: <https://www.cms.gov/Medicare/Coding/ICD10/index.html>

2012 - 2015 Behavioral Health Diagnosis Codes sourced from: <https://www.cms.gov/Medicare/Coding/ICD9ProviderDiagnosticCodes/codes.html>

Source: 2012 - 2016 UB Data

Camden County

Distribution of Behavioral Health Patients in the Emergency Department by Age Behavioral Health Diagnosis Code in Any Position

<u>Age</u>	<u>Calendar Year</u> <u>2012</u>	<u>Calendar Year</u> <u>2013</u>	<u>Calendar Year</u> <u>2014</u>	<u>Calendar Year</u> <u>2015</u>	<u>Calendar Year</u> <u>2016</u>
0 - 12 years (Child)	804	837	923	1,000	1,137
13 - 21 years (Adolescent)	2,999	2,773	2,697	2,945	3,517
22 - 54 years (Adult)	17,187	16,606	17,367	20,893	26,845
55 years + (Geriatric)	6,977	7,361	8,899	10,353	13,022
Total	27,967	27,577	29,886	35,191	44,521
Total Emergency Department Visits	274,724	279,535	288,925	289,408	285,303
% BH Volume of Total Volume	10.18%	9.87%	10.34%	12.16%	15.60%

Distribution of Behavioral Health Patients in the Emergency Department by Payer Mix Behavioral Health Diagnosis Code in Any Position

<u>Payer Mix</u>	<u>Calendar Year</u> <u>2012</u>	<u>Calendar Year</u> <u>2013</u>	<u>Calendar Year</u> <u>2014</u>	<u>Calendar Year</u> <u>2015</u>	<u>Calendar Year</u> <u>2016</u>
Medicare - HMO & FFS	7,851	7,974	9,433	10,636	12,430
Medicaid - HMO & FFS	4,263	4,042	8,440	11,577	16,164
Blue Cross / Commercial	7,292	7,119	7,943	9,336	11,298
Charity Care / Uninsured	8,104	7,985	3,574	2,976	3,636
Other	457	457	496	666	993
Total	27,967	27,577	29,886	35,191	44,521

2016 Behavioral Health Diagnosis Codes sourced from: <https://www.cms.gov/Medicare/Coding/ICD10/index.html>

2012 - 2015 Behavioral Health Diagnosis Codes sourced from: <https://www.cms.gov/Medicare/Coding/ICD9ProviderDiagnosticCodes/codes.html>

Source: 2012 - 2016 UB Data

Cape May County

Distribution of Behavioral Health Patients in the Emergency Department by Age Behavioral Health Diagnosis Code in Any Position

<u>Age</u>	<u>Calendar Year</u> <u>2012</u>	<u>Calendar Year</u> <u>2013</u>	<u>Calendar Year</u> <u>2014</u>	<u>Calendar Year</u> <u>2015</u>	<u>Calendar Year</u> <u>2016</u>
0 - 12 years (Child)	84	86	95	70	91
13 - 21 years (Adolescent)	596	527	523	537	546
22 - 54 years (Adult)	1,873	1,922	1,839	1,755	1,888
55 years + (Geriatric)	1,110	1,134	1,198	1,326	1,528
Total	3,663	3,669	3,655	3,688	4,053
Total Emergency Department Visits	38,308	38,099	38,335	38,358	38,018
% BH Volume of Total Volume	9.56%	9.63%	9.53%	9.61%	10.66%

Distribution of Behavioral Health Patients in the Emergency Department by Payer Mix Behavioral Health Diagnosis Code in Any Position

<u>Payer Mix</u>	<u>Calendar Year</u> <u>2012</u>	<u>Calendar Year</u> <u>2013</u>	<u>Calendar Year</u> <u>2014</u>	<u>Calendar Year</u> <u>2015</u>	<u>Calendar Year</u> <u>2016</u>
Medicare - HMO & FFS	1,209	1,112	1,106	1,204	1,333
Medicaid - HMO & FFS	571	627	1,306	1,286	1,414
Blue Cross / Commercial	1,058	1,398	1,093	856	853
Charity Care / Uninsured	696	427	48	233	311
Other	129	105	102	109	142
Total	3,663	3,669	3,655	3,688	4,053

2016 Behavioral Health Diagnosis Codes sourced from: <https://www.cms.gov/Medicare/Coding/ICD10/index.html>

2012 - 2015 Behavioral Health Diagnosis Codes sourced from: <https://www.cms.gov/Medicare/Coding/ICD9ProviderDiagnosticCodes/codes.html>

Source: 2012 - 2016 UB Data

Cumberland County

Distribution of Behavioral Health Patients in the Emergency Department by Age Behavioral Health Diagnosis Code in Any Position

<u>Age</u>	<u>Calendar Year</u> <u>2012</u>	<u>Calendar Year</u> <u>2013</u>	<u>Calendar Year</u> <u>2014</u>	<u>Calendar Year</u> <u>2015</u>	<u>Calendar Year</u> <u>2016</u>
0 - 12 years (Child)	283	344	522	583	668
13 - 21 years (Adolescent)	1,631	1,787	1,835	1,818	1,780
22 - 54 years (Adult)	10,880	12,374	13,281	13,674	14,156
55 years + (Geriatric)	3,309	3,463	3,721	4,149	4,422
Total	16,103	17,968	19,359	20,224	21,026
Total Emergency Department Visits	72,503	71,610	71,298	73,970	60,241
% BH Volume of Total Volume	22.21%	25.09%	27.15%	27.34%	34.90%

Distribution of Behavioral Health Patients in the Emergency Department by Payer Mix Behavioral Health Diagnosis Code in Any Position

<u>Payer Mix</u>	<u>Calendar Year</u> <u>2012</u>	<u>Calendar Year</u> <u>2013</u>	<u>Calendar Year</u> <u>2014</u>	<u>Calendar Year</u> <u>2015</u>	<u>Calendar Year</u> <u>2016</u>
Medicare - HMO & FFS	3,346	3,754	3,813	4,060	4,306
Medicaid - HMO & FFS	3,676	4,345	7,883	9,441	9,554
Blue Cross / Commercial	3,336	3,232	3,396	3,324	3,409
Charity Care / Uninsured	5,274	6,043	3,493	2,503	2,783
Other	471	594	774	896	974
Total	16,103	17,968	19,359	20,224	21,026

2016 Behavioral Health Diagnosis Codes sourced from: <https://www.cms.gov/Medicare/Coding/ICD10/index.html>

2012 - 2015 Behavioral Health Diagnosis Codes sourced from: <https://www.cms.gov/Medicare/Coding/ICD9ProviderDiagnosticCodes/codes.html>

Source: 2012 - 2016 UB Data

Essex County

Distribution of Behavioral Health Patients in the Emergency Department by Age Behavioral Health Diagnosis Code in Any Position

<u>Age</u>	<u>Calendar Year</u> <u>2012</u>	<u>Calendar Year</u> <u>2013</u>	<u>Calendar Year</u> <u>2014</u>	<u>Calendar Year</u> <u>2015</u>	<u>Calendar Year</u> <u>2016</u>
0 - 12 years (Child)	1,788	1,780	1,593	2,097	1,975
13 - 21 years (Adolescent)	7,989	7,615	7,052	6,941	5,263
22 - 54 years (Adult)	56,890	53,444	50,318	53,364	36,770
55 years + (Geriatric)	13,308	14,130	14,707	16,247	11,993
Total	79,975	76,969	73,670	78,649	56,001
Total Emergency Department Visits	375,524	371,880	372,934	389,845	326,409
% BH Volume of Total Volume	21.30%	20.70%	19.75%	20.17%	17.16%

Distribution of Behavioral Health Patients in the Emergency Department by Payer Mix Behavioral Health Diagnosis Code in Any Position

<u>Payer Mix</u>	<u>Calendar Year</u> <u>2012</u>	<u>Calendar Year</u> <u>2013</u>	<u>Calendar Year</u> <u>2014</u>	<u>Calendar Year</u> <u>2015</u>	<u>Calendar Year</u> <u>2016</u>
Medicare - HMO & FFS	8,842	8,800	9,630	10,019	7,315
Medicaid - HMO & FFS	9,474	10,030	18,136	24,209	18,023
Blue Cross / Commercial	26,442	24,715	23,482	26,526	18,760
Charity Care / Uninsured	33,924	32,120	21,228	16,769	11,246
Other	1,293	1,304	1,194	1,126	657
Total	79,975	76,969	73,670	78,649	56,001

2016 Behavioral Health Diagnosis Codes sourced from: <https://www.cms.gov/Medicare/Coding/ICD10/index.html>

2012 - 2015 Behavioral Health Diagnosis Codes sourced from: <https://www.cms.gov/Medicare/Coding/ICD9ProviderDiagnosticCodes/codes.html>

Source: 2012 - 2016 UB Data

Gloucester County

Distribution of Behavioral Health Patients in the Emergency Department by Age Behavioral Health Diagnosis Code in Any Position

<u>Age</u>	<u>Calendar Year</u> <u>2012</u>	<u>Calendar Year</u> <u>2013</u>	<u>Calendar Year</u> <u>2014</u>	<u>Calendar Year</u> <u>2015</u>	<u>Calendar Year</u> <u>2016</u>
0 - 12 years (Child)	242	263	290	305	438
13 - 21 years (Adolescent)	1,386	1,377	1,342	1,586	2,344
22 - 54 years (Adult)	4,983	4,941	4,622	5,680	11,908
55 years + (Geriatric)	2,198	2,604	2,628	2,908	4,671
Total	8,809	9,185	8,882	10,479	19,361
Total Emergency Department Visits	103,259	98,518	101,466	103,262	100,140
% BH Volume of Total Volume	8.53%	9.32%	8.75%	10.15%	19.33%

Distribution of Behavioral Health Patients in the Emergency Department by Payer Mix Behavioral Health Diagnosis Code in Any Position

<u>Payer Mix</u>	<u>Calendar Year</u> <u>2012</u>	<u>Calendar Year</u> <u>2013</u>	<u>Calendar Year</u> <u>2014</u>	<u>Calendar Year</u> <u>2015</u>	<u>Calendar Year</u> <u>2016</u>
Medicare - HMO & FFS	3,157	3,469	3,196	3,090	4,382
Medicaid - HMO & FFS	580	582	1,632	2,952	6,802
Blue Cross / Commercial	2,833	2,873	2,660	3,081	5,384
Charity Care / Uninsured	2,130	2,162	1,277	1,144	2,009
Other	109	99	117	212	784
Total	8,809	9,185	8,882	10,479	19,361

2016 Behavioral Health Diagnosis Codes sourced from: <https://www.cms.gov/Medicare/Coding/ICD10/index.html>

2012 - 2015 Behavioral Health Diagnosis Codes sourced from: <https://www.cms.gov/Medicare/Coding/ICD9ProviderDiagnosticCodes/codes.html>

Source: 2012 - 2016 UB Data

Hudson County

Distribution of Behavioral Health Patients in the Emergency Department by Age Behavioral Health Diagnosis Code in Any Position

<u>Age</u>	<u>Calendar Year</u> <u>2012</u>	<u>Calendar Year</u> <u>2013</u>	<u>Calendar Year</u> <u>2014</u>	<u>Calendar Year</u> <u>2015</u>	<u>Calendar Year</u> <u>2016</u>
0 - 12 years (Child)	724	768	900	859	963
13 - 21 years (Adolescent)	2,990	3,045	3,044	2,955	2,576
22 - 54 years (Adult)	24,952	23,909	25,017	26,791	24,017
55 years + (Geriatric)	6,429	6,435	6,596	8,881	9,910
Total	35,095	34,157	35,557	39,486	37,466
Total Emergency Department Visits	205,386	166,596	178,243	211,370	216,043
% BH Volume of Total Volume	17.09%	20.50%	19.95%	18.68%	17.34%

Distribution of Behavioral Health Patients in the Emergency Department by Payer Mix Behavioral Health Diagnosis Code in Any Position

<u>Payer Mix</u>	<u>Calendar Year</u> <u>2012</u>	<u>Calendar Year</u> <u>2013</u>	<u>Calendar Year</u> <u>2014</u>	<u>Calendar Year</u> <u>2015</u>	<u>Calendar Year</u> <u>2016</u>
Medicare - HMO & FFS	4,173	3,919	4,252	5,676	5,984
Medicaid - HMO & FFS	4,896	5,055	8,869	11,432	9,672
Blue Cross / Commercial	9,396	9,125	10,625	13,177	13,066
Charity Care / Uninsured	15,024	14,459	10,513	8,222	7,741
Other	1,606	1,599	1,298	979	1,003
Total	35,095	34,157	35,557	39,486	37,466

2016 Behavioral Health Diagnosis Codes sourced from: <https://www.cms.gov/Medicare/Coding/ICD10/index.html>

2012 - 2015 Behavioral Health Diagnosis Codes sourced from: <https://www.cms.gov/Medicare/Coding/ICD9ProviderDiagnosticCodes/codes.html>

Source: 2012 - 2016 UB Data

Hunterdon County

Distribution of Behavioral Health Patients in the Emergency Department by Age Behavioral Health Diagnosis Code in Any Position

<u>Age</u>	<u>Calendar Year</u> <u>2012</u>	<u>Calendar Year</u> <u>2013</u>	<u>Calendar Year</u> <u>2014</u>	<u>Calendar Year</u> <u>2015</u>	<u>Calendar Year</u> <u>2016</u>
0 - 12 years (Child)	64	64	69	64	104
13 - 21 years (Adolescent)	492	449	542	496	560
22 - 54 years (Adult)	1,496	1,491	1,595	1,660	2,008
55 years + (Geriatric)	665	667	789	966	1,271
Total	2,717	2,671	2,995	3,186	3,943
Total Emergency Department Visits	27,143	25,879	27,017	27,128	27,364
% BH Volume of Total Volume	10.01%	10.32%	11.09%	11.74%	14.41%

Distribution of Behavioral Health Patients in the Emergency Department by Payer Mix Behavioral Health Diagnosis Code in Any Position

<u>Payer Mix</u>	<u>Calendar Year</u> <u>2012</u>	<u>Calendar Year</u> <u>2013</u>	<u>Calendar Year</u> <u>2014</u>	<u>Calendar Year</u> <u>2015</u>	<u>Calendar Year</u> <u>2016</u>
Medicare - HMO & FFS	710	771	872	1,003	1,211
Medicaid - HMO & FFS	38	35	82	100	133
Blue Cross / Commercial	1,350	1,268	1,560	1,754	2,221
Charity Care / Uninsured	452	475	416	298	302
Other	167	122	65	31	76
Total	2,717	2,671	2,995	3,186	3,943

2016 Behavioral Health Diagnosis Codes sourced from: <https://www.cms.gov/Medicare/Coding/ICD10/index.html>

2012 - 2015 Behavioral Health Diagnosis Codes sourced from: <https://www.cms.gov/Medicare/Coding/ICD9ProviderDiagnosticCodes/codes.html>

Source: 2012 - 2016 UB Data

Mercer County

Distribution of Behavioral Health Patients in the Emergency Department by Age Behavioral Health Diagnosis Code in Any Position

<u>Age</u>	<u>Calendar Year</u> <u>2012</u>	<u>Calendar Year</u> <u>2013</u>	<u>Calendar Year</u> <u>2014</u>	<u>Calendar Year</u> <u>2015</u>	<u>Calendar Year</u> <u>2016</u>
0 - 12 years (Child)	717	656	699	744	817
13 - 21 years (Adolescent)	3,291	2,539	2,337	2,479	2,714
22 - 54 years (Adult)	18,012	17,367	16,466	19,583	23,543
55 years + (Geriatric)	5,642	4,492	4,772	5,887	7,108
Total	27,662	25,054	24,274	28,693	34,182
Total Emergency Department Visits	181,541	150,013	154,168	157,763	159,493
% BH Volume of Total Volume	15.24%	16.70%	15.75%	18.19%	21.43%

Distribution of Behavioral Health Patients in the Emergency Department by Payer Mix Behavioral Health Diagnosis Code in Any Position

<u>Payer Mix</u>	<u>Calendar Year</u> <u>2012</u>	<u>Calendar Year</u> <u>2013</u>	<u>Calendar Year</u> <u>2014</u>	<u>Calendar Year</u> <u>2015</u>	<u>Calendar Year</u> <u>2016</u>
Medicare - HMO & FFS	4,762	3,577	3,657	4,607	5,440
Medicaid - HMO & FFS	3,926	3,673	5,546	7,670	9,381
Blue Cross / Commercial	8,536	7,856	9,071	11,051	12,337
Charity Care / Uninsured	9,855	9,452	5,285	4,667	6,214
Other	583	496	715	698	810
Total	27,662	25,054	24,274	28,693	34,182

2016 Behavioral Health Diagnosis Codes sourced from: <https://www.cms.gov/Medicare/Coding/ICD10/index.html>

2012 - 2015 Behavioral Health Diagnosis Codes sourced from: <https://www.cms.gov/Medicare/Coding/ICD9ProviderDiagnosticCodes/codes.html>

Source: 2012 - 2016 UB Data

Middlesex County

Distribution of Behavioral Health Patients in the Emergency Department by Age Behavioral Health Diagnosis Code in Any Position

<u>Age</u>	<u>Calendar Year</u> <u>2012</u>	<u>Calendar Year</u> <u>2013</u>	<u>Calendar Year</u> <u>2014</u>	<u>Calendar Year</u> <u>2015</u>	<u>Calendar Year</u> <u>2016</u>
0 - 12 years (Child)	825	867	926	941	909
13 - 21 years (Adolescent)	4,764	4,896	5,237	5,369	5,220
22 - 54 years (Adult)	23,040	23,202	25,489	27,875	27,660
55 years + (Geriatric)	7,712	9,893	10,892	11,806	12,372
Total	36,341	38,858	42,544	45,991	46,161
Total Emergency Department Visits	266,469	298,586	297,607	298,905	309,750
% BH Volume of Total Volume	13.64%	13.01%	14.30%	15.39%	14.90%

Distribution of Behavioral Health Patients in the Emergency Department by Payer Mix Behavioral Health Diagnosis Code in Any Position

<u>Payer Mix</u>	<u>Calendar Year</u> <u>2012</u>	<u>Calendar Year</u> <u>2013</u>	<u>Calendar Year</u> <u>2014</u>	<u>Calendar Year</u> <u>2015</u>	<u>Calendar Year</u> <u>2016</u>
Medicare - HMO & FFS	6,848	8,375	9,006	9,697	10,043
Medicaid - HMO & FFS	5,309	5,289	9,951	13,610	13,768
Blue Cross / Commercial	10,761	11,830	12,707	13,331	13,325
Charity Care / Uninsured	12,238	12,222	9,616	8,022	7,682
Other	1,185	1,142	1,264	1,331	1,343
Total	36,341	38,858	42,544	45,991	46,161

2016 Behavioral Health Diagnosis Codes sourced from: <https://www.cms.gov/Medicare/Coding/ICD10/index.html>

2012 - 2015 Behavioral Health Diagnosis Codes sourced from: <https://www.cms.gov/Medicare/Coding/ICD9ProviderDiagnosticCodes/codes.html>

Source: 2012 - 2016 UB Data

Monmouth County

Distribution of Behavioral Health Patients in the Emergency Department by Age Behavioral Health Diagnosis Code in Any Position

<u>Age</u>	<u>Calendar Year</u> <u>2012</u>	<u>Calendar Year</u> <u>2013</u>	<u>Calendar Year</u> <u>2014</u>	<u>Calendar Year</u> <u>2015</u>	<u>Calendar Year</u> <u>2016</u>
0 - 12 years (Child)	1,083	1,107	1,195	1,124	1,100
13 - 21 years (Adolescent)	5,019	4,859	4,680	4,867	4,587
22 - 54 years (Adult)	26,214	25,979	27,274	27,878	27,156
55 years + (Geriatric)	11,731	12,562	14,140	15,431	15,515
Total	44,047	44,507	47,289	49,300	48,358
Total Emergency Department Visits	223,854	219,526	219,507	224,357	223,755
% BH Volume of Total Volume	19.68%	20.27%	21.54%	21.97%	21.61%

Distribution of Behavioral Health Patients in the Emergency Department by Payer Mix Behavioral Health Diagnosis Code in Any Position

<u>Payer Mix</u>	<u>Calendar Year</u> <u>2012</u>	<u>Calendar Year</u> <u>2013</u>	<u>Calendar Year</u> <u>2014</u>	<u>Calendar Year</u> <u>2015</u>	<u>Calendar Year</u> <u>2016</u>
Medicare - HMO & FFS	10,542	10,930	12,429	13,246	13,021
Medicaid - HMO & FFS	7,286	7,362	12,547	15,786	15,647
Blue Cross / Commercial	13,677	13,593	13,792	13,308	13,064
Charity Care / Uninsured	10,834	10,912	6,777	5,047	5,054
Other	1,708	1,710	1,744	1,913	1,572
Total	44,047	44,507	47,289	49,300	48,358

2016 Behavioral Health Diagnosis Codes sourced from: <https://www.cms.gov/Medicare/Coding/ICD10/index.html>

2012 - 2015 Behavioral Health Diagnosis Codes sourced from: <https://www.cms.gov/Medicare/Coding/ICD9ProviderDiagnosticCodes/codes.html>

Source: 2012 - 2016 UB Data

Morris County

Distribution of Behavioral Health Patients in the Emergency Department by Age Behavioral Health Diagnosis Code in Any Position

<u>Age</u>	<u>Calendar Year</u> <u>2012</u>	<u>Calendar Year</u> <u>2013</u>	<u>Calendar Year</u> <u>2014</u>	<u>Calendar Year</u> <u>2015</u>	<u>Calendar Year</u> <u>2016</u>
0 - 12 years (Child)	988	1,032	1,030	942	851
13 - 21 years (Adolescent)	3,788	4,112	4,847	4,709	4,553
22 - 54 years (Adult)	12,534	14,902	19,338	21,083	22,598
55 years + (Geriatric)	5,476	7,015	9,039	10,407	12,367
Total	22,786	27,061	34,254	37,141	40,369
Total Emergency Department Visits	145,348	142,240	145,596	148,913	150,882
% BH Volume of Total Volume	15.68%	19.02%	23.53%	24.94%	26.76%

Distribution of Behavioral Health Patients in the Emergency Department by Payer Mix Behavioral Health Diagnosis Code in Any Position

<u>Payer Mix</u>	<u>Calendar Year</u> <u>2012</u>	<u>Calendar Year</u> <u>2013</u>	<u>Calendar Year</u> <u>2014</u>	<u>Calendar Year</u> <u>2015</u>	<u>Calendar Year</u> <u>2016</u>
Medicare - HMO & FFS	4,473	5,424	6,785	7,720	8,691
Medicaid - HMO & FFS	1,136	1,393	2,739	3,376	3,263
Blue Cross / Commercial	13,392	14,704	17,431	19,918	22,141
Charity Care / Uninsured	3,069	4,446	5,762	4,160	4,386
Other	716	1,094	1,537	1,967	1,888
Total	22,786	27,061	34,254	37,141	40,369

2016 Behavioral Health Diagnosis Codes sourced from: <https://www.cms.gov/Medicare/Coding/ICD10/index.html>

2012 - 2015 Behavioral Health Diagnosis Codes sourced from: <https://www.cms.gov/Medicare/Coding/ICD9ProviderDiagnosticCodes/codes.html>

Source: 2012 - 2016 UB Data

Ocean County

Distribution of Behavioral Health Patients in the Emergency Department by Age Behavioral Health Diagnosis Code in Any Position

<u>Age</u>	<u>Calendar Year</u> <u>2012</u>	<u>Calendar Year</u> <u>2013</u>	<u>Calendar Year</u> <u>2014</u>	<u>Calendar Year</u> <u>2015</u>	<u>Calendar Year</u> <u>2016</u>
0 - 12 years (Child)	1,010	783	717	774	770
13 - 21 years (Adolescent)	4,362	3,769	3,662	3,891	4,022
22 - 54 years (Adult)	25,954	21,891	23,426	26,806	28,180
55 years + (Geriatric)	13,154	12,026	13,471	15,972	17,225
Total	44,480	38,469	41,276	47,443	50,197
Total Emergency Department Visits	217,096	203,134	199,516	202,779	200,956
% BH Volume of Total Volume	20.49%	18.94%	20.69%	23.40%	24.98%

Distribution of Behavioral Health Patients in the Emergency Department by Payer Mix Behavioral Health Diagnosis Code in Any Position

<u>Payer Mix</u>	<u>Calendar Year</u> <u>2012</u>	<u>Calendar Year</u> <u>2013</u>	<u>Calendar Year</u> <u>2014</u>	<u>Calendar Year</u> <u>2015</u>	<u>Calendar Year</u> <u>2016</u>
Medicare - HMO & FFS	12,777	11,622	13,057	15,038	15,835
Medicaid - HMO & FFS	7,422	6,228	10,605	14,562	15,946
Blue Cross / Commercial	11,882	9,904	10,035	11,303	11,812
Charity Care / Uninsured	11,320	9,839	6,323	5,174	5,179
Other	1,079	876	1,256	1,366	1,425
Total	44,480	38,469	41,276	47,443	50,197

2016 Behavioral Health Diagnosis Codes sourced from: <https://www.cms.gov/Medicare/Coding/ICD10/index.html>

2012 - 2015 Behavioral Health Diagnosis Codes sourced from: <https://www.cms.gov/Medicare/Coding/ICD9ProviderDiagnosticCodes/codes.html>

Source: 2012 - 2016 UB Data

Passaic County

Distribution of Behavioral Health Patients in the Emergency Department by Age Behavioral Health Diagnosis Code in Any Position

<u>Age</u>	<u>Calendar Year</u> <u>2012</u>	<u>Calendar Year</u> <u>2013</u>	<u>Calendar Year</u> <u>2014</u>	<u>Calendar Year</u> <u>2015</u>	<u>Calendar Year</u> <u>2016</u>
0 - 12 years (Child)	641	613	640	680	682
13 - 21 years (Adolescent)	2,815	2,620	2,429	2,328	2,328
22 - 54 years (Adult)	14,537	13,232	12,509	11,520	12,919
55 years + (Geriatric)	3,702	3,783	3,882	3,801	4,988
Total	21,695	20,248	19,460	18,329	20,917
Total Emergency Department Visits	161,198	170,509	171,317	181,856	183,528
% BH Volume of Total Volume	13.46%	11.88%	11.36%	10.08%	11.40%

Distribution of Behavioral Health Patients in the Emergency Department by Payer Mix Behavioral Health Diagnosis Code in Any Position

<u>Payer Mix</u>	<u>Calendar Year</u> <u>2012</u>	<u>Calendar Year</u> <u>2013</u>	<u>Calendar Year</u> <u>2014</u>	<u>Calendar Year</u> <u>2015</u>	<u>Calendar Year</u> <u>2016</u>
Medicare - HMO & FFS	2,609	2,494	2,576	2,574	3,294
Medicaid - HMO & FFS	5,430	4,776	6,954	8,545	9,202
Blue Cross / Commercial	4,051	4,016	4,067	3,290	4,071
Charity Care / Uninsured	9,208	8,643	5,541	3,659	3,931
Other	397	319	322	261	419
Total	21,695	20,248	19,460	18,329	20,917

2016 Behavioral Health Diagnosis Codes sourced from: <https://www.cms.gov/Medicare/Coding/ICD10/index.html>

2012 - 2015 Behavioral Health Diagnosis Codes sourced from: <https://www.cms.gov/Medicare/Coding/ICD9ProviderDiagnosticCodes/codes.html>

Source: 2012 - 2016 UB Data

Salem County

Distribution of Behavioral Health Patients in the Emergency Department by Age Behavioral Health Diagnosis Code in Any Position

<u>Age</u>	<u>Calendar Year</u> <u>2012</u>	<u>Calendar Year</u> <u>2013</u>	<u>Calendar Year</u> <u>2014</u>	<u>Calendar Year</u> <u>2015</u>	<u>Calendar Year</u> <u>2016</u>
0 - 12 years (Child)	56	45	82	154	177
13 - 21 years (Adolescent)	471	506	840	917	819
22 - 54 years (Adult)	2,908	3,242	6,798	7,351	6,192
55 years + (Geriatric)	829	976	1,740	2,259	2,371
Total	4,264	4,769	9,460	10,681	9,559
Total Emergency Department Visits	35,670	34,389	35,410	36,674	37,137
% BH Volume of Total Volume	11.95%	13.87%	26.72%	29.12%	25.74%

Distribution of Behavioral Health Patients in the Emergency Department by Payer Mix Behavioral Health Diagnosis Code in Any Position

<u>Payer Mix</u>	<u>Calendar Year</u> <u>2012</u>	<u>Calendar Year</u> <u>2013</u>	<u>Calendar Year</u> <u>2014</u>	<u>Calendar Year</u> <u>2015</u>	<u>Calendar Year</u> <u>2016</u>
Medicare - HMO & FFS	792	866	1,541	2,109	2,197
Medicaid - HMO & FFS	517	584	1,753	1,831	1,920
Blue Cross / Commercial	1,694	1,829	4,565	5,057	4,068
Charity Care / Uninsured	1,145	1,333	1,293	1,234	978
Other	116	157	308	450	396
Total	4,264	4,769	9,460	10,681	9,559

2016 Behavioral Health Diagnosis Codes sourced from: <https://www.cms.gov/Medicare/Coding/ICD10/index.html>

2012 - 2015 Behavioral Health Diagnosis Codes sourced from: <https://www.cms.gov/Medicare/Coding/ICD9ProviderDiagnosticCodes/codes.html>

Source: 2012 - 2016 UB Data

Somerset County

Distribution of Behavioral Health Patients in the Emergency Department by Age Behavioral Health Diagnosis Code in Any Position

<u>Age</u>	<u>Calendar Year</u> <u>2012</u>	<u>Calendar Year</u> <u>2013</u>	<u>Calendar Year</u> <u>2014</u>	<u>Calendar Year</u> <u>2015</u>	<u>Calendar Year</u> <u>2016</u>
0 - 12 years (Child)	228	235	224	242	212
13 - 21 years (Adolescent)	1,575	1,498	1,455	1,592	1,586
22 - 54 years (Adult)	7,938	8,089	8,313	9,141	8,748
55 years + (Geriatric)	2,698	2,711	3,214	3,874	3,932
Total	12,439	12,533	13,206	14,849	14,478
Total Emergency Department Visits	41,317	39,865	40,041	43,086	43,082
% BH Volume of Total Volume	30.11%	31.44%	32.98%	34.46%	33.61%

Distribution of Behavioral Health Patients in the Emergency Department by Payer Mix Behavioral Health Diagnosis Code in Any Position

<u>Payer Mix</u>	<u>Calendar Year</u> <u>2012</u>	<u>Calendar Year</u> <u>2013</u>	<u>Calendar Year</u> <u>2014</u>	<u>Calendar Year</u> <u>2015</u>	<u>Calendar Year</u> <u>2016</u>
Medicare - HMO & FFS	2,577	2,526	2,806	3,415	3,401
Medicaid - HMO & FFS	2,023	2,223	3,287	1,132	2,798
Blue Cross / Commercial	4,176	3,973	4,427	7,893	6,159
Charity Care / Uninsured	3,051	3,249	2,115	2,140	1,997
Other	612	562	571	269	123
Total	12,439	12,533	13,206	14,849	14,478

2016 Behavioral Health Diagnosis Codes sourced from: <https://www.cms.gov/Medicare/Coding/ICD10/index.html>

2012 - 2015 Behavioral Health Diagnosis Codes sourced from: <https://www.cms.gov/Medicare/Coding/ICD9ProviderDiagnosticCodes/codes.html>

Source: 2012 - 2016 UB Data

Sussex County

Distribution of Behavioral Health Patients in the Emergency Department by Age Behavioral Health Diagnosis Code in Any Position

<u>Age</u>	<u>Calendar Year</u> <u>2012</u>	<u>Calendar Year</u> <u>2013</u>	<u>Calendar Year</u> <u>2014</u>	<u>Calendar Year</u> <u>2015</u>	<u>Calendar Year</u> <u>2016</u>
0 - 12 years (Child)	175	132	184	220	244
13 - 21 years (Adolescent)	1,260	979	1,155	1,368	1,474
22 - 54 years (Adult)	5,293	4,121	5,590	6,996	7,859
55 years + (Geriatric)	1,389	1,409	1,901	2,756	3,424
Total	8,117	6,641	8,830	11,340	13,001
Total Emergency Department Visits	28,547	23,208	28,081	30,695	33,164
% BH Volume of Total Volume	28.43%	28.62%	31.44%	36.94%	39.20%

Distribution of Behavioral Health Patients in the Emergency Department by Payer Mix Behavioral Health Diagnosis Code in Any Position

<u>Payer Mix</u>	<u>Calendar Year</u> <u>2012</u>	<u>Calendar Year</u> <u>2013</u>	<u>Calendar Year</u> <u>2014</u>	<u>Calendar Year</u> <u>2015</u>	<u>Calendar Year</u> <u>2016</u>
Medicare - HMO & FFS	1,332	1,427	1,706	2,551	3,017
Medicaid - HMO & FFS	491	461	1,314	1,595	1,559
Blue Cross / Commercial	4,055	2,702	4,133	5,562	6,734
Charity Care / Uninsured	1,816	1,602	1,071	917	992
Other	423	449	606	715	699
Total	8,117	6,641	8,830	11,340	13,001

2016 Behavioral Health Diagnosis Codes sourced from: <https://www.cms.gov/Medicare/Coding/ICD10/index.html>

2012 - 2015 Behavioral Health Diagnosis Codes sourced from: <https://www.cms.gov/Medicare/Coding/ICD9ProviderDiagnosticCodes/codes.html>

Source: 2012 - 2016 UB Data

Union County

Distribution of Behavioral Health Patients in the Emergency Department by Age Behavioral Health Diagnosis Code in Any Position

<u>Age</u>	<u>Calendar Year</u> <u>2012</u>	<u>Calendar Year</u> <u>2013</u>	<u>Calendar Year</u> <u>2014</u>	<u>Calendar Year</u> <u>2015</u>	<u>Calendar Year</u> <u>2016</u>
0 - 12 years (Child)	885	835	775	787	741
13 - 21 years (Adolescent)	2,917	2,964	2,876	2,685	2,605
22 - 54 years (Adult)	16,135	15,931	14,996	15,791	16,117
55 years + (Geriatric)	5,730	6,699	6,826	7,946	7,734
Total	25,667	26,429	25,473	27,209	27,197
Total Emergency Department Visits	161,870	165,988	170,599	176,724	180,327
% BH Volume of Total Volume	15.86%	15.92%	14.93%	15.40%	15.08%

Distribution of Behavioral Health Patients in the Emergency Department by Payer Mix Behavioral Health Diagnosis Code in Any Position

<u>Payer Mix</u>	<u>Calendar Year</u> <u>2012</u>	<u>Calendar Year</u> <u>2013</u>	<u>Calendar Year</u> <u>2014</u>	<u>Calendar Year</u> <u>2015</u>	<u>Calendar Year</u> <u>2016</u>
Medicare - HMO & FFS	4,580	5,095	5,190	5,893	5,615
Medicaid - HMO & FFS	4,138	3,864	6,202	7,893	9,049
Blue Cross / Commercial	7,644	7,871	7,857	8,581	7,332
Charity Care / Uninsured	8,174	8,534	5,272	3,846	4,425
Other	1,131	1,065	952	996	776
Total	25,667	26,429	25,473	27,209	27,197

2016 Behavioral Health Diagnosis Codes sourced from: <https://www.cms.gov/Medicare/Coding/ICD10/index.html>

2012 - 2015 Behavioral Health Diagnosis Codes sourced from: <https://www.cms.gov/Medicare/Coding/ICD9ProviderDiagnosticCodes/codes.html>

Source: 2012 - 2016 UB Data

Warren County

Distribution of Behavioral Health Patients in the Emergency Department by Age Behavioral Health Diagnosis Code in Any Position

<u>Age</u>	<u>Calendar Year</u> <u>2012</u>	<u>Calendar Year</u> <u>2013</u>	<u>Calendar Year</u> <u>2014</u>	<u>Calendar Year</u> <u>2015</u>	<u>Calendar Year</u> <u>2016</u>
0 - 12 years (Child)	109	121	149	217	244
13 - 21 years (Adolescent)	770	733	1,004	1,237	1,066
22 - 54 years (Adult)	3,787	3,801	5,790	7,636	7,776
55 years + (Geriatric)	1,571	1,774	1,989	2,875	3,149
Total	6,237	6,429	8,932	11,965	12,235
Total Emergency Department Visits	42,769	41,496	40,372	40,998	39,155
% BH Volume of Total Volume	14.58%	15.49%	22.12%	29.18%	31.25%

Distribution of Behavioral Health Patients in the Emergency Department by Payer Mix Behavioral Health Diagnosis Code in Any Position

<u>Payer Mix</u>	<u>Calendar Year</u> <u>2012</u>	<u>Calendar Year</u> <u>2013</u>	<u>Calendar Year</u> <u>2014</u>	<u>Calendar Year</u> <u>2015</u>	<u>Calendar Year</u> <u>2016</u>
Medicare - HMO & FFS	1,446	1,581	1,815	2,507	2,970
Medicaid - HMO & FFS	890	877	2,522	3,972	4,009
Blue Cross / Commercial	2,268	2,230	2,892	3,615	3,617
Charity Care / Uninsured	1,439	1,585	1,470	1,572	1,224
Other	194	156	233	299	415
Total	6,237	6,429	8,932	11,965	12,235

2016 Behavioral Health Diagnosis Codes sourced from: <https://www.cms.gov/Medicare/Coding/ICD10/index.html>

2012 - 2015 Behavioral Health Diagnosis Codes sourced from: <https://www.cms.gov/Medicare/Coding/ICD9ProviderDiagnosticCodes/codes.html>

Source: 2012 - 2016 UB Data



Distribution by Age

Distribution by Payer Mix

**Emergency Department
Mental Health or Substance
Use Disorder Diagnosis Codes
in *Primary* Position**

*Statewide and County
2012 - 2016*



Statewide

Distribution of Behavioral Health Patients in the Emergency Department by Age Behavioral Health Diagnosis Code in **Primary** Position

<u>Age</u>	<u>Calendar Year</u> <u>2012</u>	<u>Calendar Year</u> <u>2013</u>	<u>Calendar Year</u> <u>2014</u>	<u>Calendar Year</u> <u>2015</u>	<u>Calendar Year</u> <u>2016</u>
0 - 12 years (Child)	5,717	6,022	6,249	6,498	6,571
13 - 21 years (Adolescent)	27,284	26,496	26,826	27,100	25,810
22 - 54 years (Adult)	95,383	92,846	93,096	100,282	99,155
55 years + (Geriatric)	25,197	26,680	28,445	32,224	32,423
Total	153,581	152,044	154,616	166,104	163,959
Total Emergency Department Visits	3,122,698	3,050,163	3,087,843	3,205,580	3,161,242
% BH Volume of Total Volume	4.92%	4.98%	5.01%	5.18%	5.19%

Distribution of Behavioral Health Patients in the Emergency Department by Payer Mix Behavioral Health Diagnosis Code in **Primary** Position

<u>Payer Mix</u>	<u>Calendar Year</u> <u>2012</u>	<u>Calendar Year</u> <u>2013</u>	<u>Calendar Year</u> <u>2014</u>	<u>Calendar Year</u> <u>2015</u>	<u>Calendar Year</u> <u>2016</u>
Medicare - HMO & FFS	21,994	22,101	23,167	25,248	24,948
Medicaid - HMO & FFS	23,647	24,187	42,975	55,627	55,917
Blue Cross / Commercial	47,917	46,470	47,321	51,106	49,016
Charity Care / Uninsured	56,887	56,332	38,068	30,762	30,568
Other	3,136	2,954	3,085	3,361	3,510
Total	153,581	152,044	154,616	166,104	163,959

2016 Behavioral Health Diagnosis Codes sourced from: <https://www.cms.gov/Medicare/Coding/ICD10/index.html>

2012 - 2015 Behavioral Health Diagnosis Codes sourced from: <https://www.cms.gov/Medicare/Coding/ICD9ProviderDiagnosticCodes/codes.html>

Source: 2012 - 2016 UB Data

Atlantic County

Distribution of Behavioral Health Patients in the Emergency Department by Age Behavioral Health Diagnosis Code in **Primary** Position

<u>Age</u>	<u>Calendar Year</u> <u>2012</u>	<u>Calendar Year</u> <u>2013</u>	<u>Calendar Year</u> <u>2014</u>	<u>Calendar Year</u> <u>2015</u>	<u>Calendar Year</u> <u>2016</u>
0 - 12 years (Child)	216	233	251	267	299
13 - 21 years (Adolescent)	1,298	1,230	1,186	1,154	1,186
22 - 54 years (Adult)	5,496	5,413	4,957	4,993	5,658
55 years + (Geriatric)	1,352	1,523	1,445	1,638	1,695
Total	8,362	8,399	7,839	8,052	8,838
Total Emergency Department Visits	147,773	146,466	145,208	147,195	147,069
% BH Volume of Total Volume	5.66%	5.73%	5.40%	5.47%	6.01%

Distribution of Behavioral Health Patients in the Emergency Department by Payer Mix Behavioral Health Diagnosis Code in **Primary** Position

<u>Payer Mix</u>	<u>Calendar Year</u> <u>2012</u>	<u>Calendar Year</u> <u>2013</u>	<u>Calendar Year</u> <u>2014</u>	<u>Calendar Year</u> <u>2015</u>	<u>Calendar Year</u> <u>2016</u>
Medicare - HMO & FFS	1,258	1,221	1,209	1,299	1,369
Medicaid - HMO & FFS	1,619	1,643	3,031	3,806	4,393
Blue Cross / Commercial	1,959	1,887	1,759	1,531	1,590
Charity Care / Uninsured	3,431	3,572	1,746	1,290	1,330
Other	95	76	94	126	156
Total	8,362	8,399	7,839	8,052	8,838

2016 Behavioral Health Diagnosis Codes sourced from: <https://www.cms.gov/Medicare/Coding/ICD10/index.html>

2012 - 2015 Behavioral Health Diagnosis Codes sourced from: <https://www.cms.gov/Medicare/Coding/ICD9ProviderDiagnosticCodes/codes.html>

Source: 2012 - 2016 UB Data

Bergen County

Distribution of Behavioral Health Patients in the Emergency Department by Age Behavioral Health Diagnosis Code in **Primary** Position

<u>Age</u>	<u>Calendar Year</u> <u>2012</u>	<u>Calendar Year</u> <u>2013</u>	<u>Calendar Year</u> <u>2014</u>	<u>Calendar Year</u> <u>2015</u>	<u>Calendar Year</u> <u>2016</u>
0 - 12 years (Child)	412	402	445	485	486
13 - 21 years (Adolescent)	2,177	2,197	2,383	2,305	2,200
22 - 54 years (Adult)	6,475	6,417	6,087	6,651	6,748
55 years + (Geriatric)	2,121	2,222	2,054	2,352	2,315
Total	11,185	11,238	10,969	11,793	11,749
Total Emergency Department Visits	239,556	234,579	235,011	256,870	262,656
% BH Volume of Total Volume	4.67%	4.79%	4.67%	4.59%	4.47%

Distribution of Behavioral Health Patients in the Emergency Department by Payer Mix Behavioral Health Diagnosis Code in **Primary** Position

<u>Payer Mix</u>	<u>Calendar Year</u> <u>2012</u>	<u>Calendar Year</u> <u>2013</u>	<u>Calendar Year</u> <u>2014</u>	<u>Calendar Year</u> <u>2015</u>	<u>Calendar Year</u> <u>2016</u>
Medicare - HMO & FFS	1,518	1,690	1,606	1,591	1,689
Medicaid - HMO & FFS	1,166	1,135	1,910	2,831	2,898
Blue Cross / Commercial	4,042	3,819	4,030	4,117	3,977
Charity Care / Uninsured	4,343	4,293	2,898	2,439	2,384
Other	116	301	525	815	801
Total	11,185	11,238	10,969	11,793	11,749

2016 Behavioral Health Diagnosis Codes sourced from: <https://www.cms.gov/Medicare/Coding/ICD10/index.html>

2012 - 2015 Behavioral Health Diagnosis Codes sourced from: <https://www.cms.gov/Medicare/Coding/ICD9ProviderDiagnosticCodes/codes.html>

Source: 2012 - 2016 UB Data

Burlington County

Distribution of Behavioral Health Patients in the Emergency Department by Age Behavioral Health Diagnosis Code in **Primary** Position

<u>Age</u>	<u>Calendar Year</u> <u>2012</u>	<u>Calendar Year</u> <u>2013</u>	<u>Calendar Year</u> <u>2014</u>	<u>Calendar Year</u> <u>2015</u>	<u>Calendar Year</u> <u>2016</u>
0 - 12 years (Child)	231	238	245	277	227
13 - 21 years (Adolescent)	1,192	1,172	1,226	1,370	1,196
22 - 54 years (Adult)	3,363	3,125	3,216	3,423	3,246
55 years + (Geriatric)	906	913	1,116	1,147	1,166
Total	5,692	5,448	5,803	6,217	5,835
Total Emergency Department Visits	132,843	128,047	127,192	125,424	136,770
% BH Volume of Total Volume	4.28%	4.25%	4.56%	4.96%	4.27%

Distribution of Behavioral Health Patients in the Emergency Department by Payer Mix Behavioral Health Diagnosis Code in **Primary** Position

<u>Payer Mix</u>	<u>Calendar Year</u> <u>2012</u>	<u>Calendar Year</u> <u>2013</u>	<u>Calendar Year</u> <u>2014</u>	<u>Calendar Year</u> <u>2015</u>	<u>Calendar Year</u> <u>2016</u>
Medicare - HMO & FFS	1,033	1,027	1,046	1,131	1,021
Medicaid - HMO & FFS	732	699	1,432	1,705	1,426
Blue Cross / Commercial	2,066	1,989	2,293	2,540	2,465
Charity Care / Uninsured	1,529	1,455	790	524	601
Other	332	278	242	317	322
Total	5,692	5,448	5,803	6,217	5,835

2016 Behavioral Health Diagnosis Codes sourced from: <https://www.cms.gov/Medicare/Coding/ICD10/index.html>

2012 - 2015 Behavioral Health Diagnosis Codes sourced from: <https://www.cms.gov/Medicare/Coding/ICD9ProviderDiagnosticCodes/codes.html>

Source: 2012 - 2016 UB Data

Camden County

Distribution of Behavioral Health Patients in the Emergency Department by Age Behavioral Health Diagnosis Code in **Primary** Position

<u>Age</u>	<u>Calendar Year</u> <u>2012</u>	<u>Calendar Year</u> <u>2013</u>	<u>Calendar Year</u> <u>2014</u>	<u>Calendar Year</u> <u>2015</u>	<u>Calendar Year</u> <u>2016</u>
0 - 12 years (Child)	668	725	811	775	825
13 - 21 years (Adolescent)	2,352	2,200	2,183	2,149	2,101
22 - 54 years (Adult)	8,766	8,513	8,527	9,354	8,762
55 years + (Geriatric)	1,937	2,110	2,348	2,549	2,766
Total	13,723	13,548	13,869	14,827	14,454
Total Emergency Department Visits	274,724	279,535	288,925	289,408	285,303
% BH Volume of Total Volume	5.00%	4.85%	4.80%	5.12%	5.07%

Distribution of Behavioral Health Patients in the Emergency Department by Payer Mix Behavioral Health Diagnosis Code in **Primary** Position

<u>Payer Mix</u>	<u>Calendar Year</u> <u>2012</u>	<u>Calendar Year</u> <u>2013</u>	<u>Calendar Year</u> <u>2014</u>	<u>Calendar Year</u> <u>2015</u>	<u>Calendar Year</u> <u>2016</u>
Medicare - HMO & FFS	2,191	2,155	2,164	2,421	2,379
Medicaid - HMO & FFS	2,817	2,759	5,562	6,509	6,010
Blue Cross / Commercial	3,806	3,716	3,763	4,046	4,105
Charity Care / Uninsured	4,724	4,741	2,213	1,646	1,738
Other	185	177	167	205	222
Total	13,723	13,548	13,869	14,827	14,454

2016 Behavioral Health Diagnosis Codes sourced from: <https://www.cms.gov/Medicare/Coding/ICD10/index.html>

2012 - 2015 Behavioral Health Diagnosis Codes sourced from: <https://www.cms.gov/Medicare/Coding/ICD9ProviderDiagnosticCodes/codes.html>

Source: 2012 - 2016 UB Data

Cape May County

Distribution of Behavioral Health Patients in the Emergency Department by Age Behavioral Health Diagnosis Code in **Primary** Position

<u>Age</u>	<u>Calendar Year</u> <u>2012</u>	<u>Calendar Year</u> <u>2013</u>	<u>Calendar Year</u> <u>2014</u>	<u>Calendar Year</u> <u>2015</u>	<u>Calendar Year</u> <u>2016</u>
0 - 12 years (Child)	81	82	89	66	78
13 - 21 years (Adolescent)	509	451	453	479	470
22 - 54 years (Adult)	1,256	1,210	1,134	1,117	1,168
55 years + (Geriatric)	335	355	403	430	454
Total	2,181	2,098	2,079	2,092	2,170
Total Emergency Department Visits	38,308	38,099	38,335	38,358	38,018
% BH Volume of Total Volume	5.69%	5.51%	5.42%	5.45%	5.71%

Distribution of Behavioral Health Patients in the Emergency Department by Payer Mix Behavioral Health Diagnosis Code in **Primary** Position

<u>Payer Mix</u>	<u>Calendar Year</u> <u>2012</u>	<u>Calendar Year</u> <u>2013</u>	<u>Calendar Year</u> <u>2014</u>	<u>Calendar Year</u> <u>2015</u>	<u>Calendar Year</u> <u>2016</u>
Medicare - HMO & FFS	344	368	360	376	396
Medicaid - HMO & FFS	453	514	970	944	970
Blue Cross / Commercial	739	853	662	531	513
Charity Care / Uninsured	549	294	25	165	197
Other	96	69	62	76	94
Total	2,181	2,098	2,079	2,092	2,170

2016 Behavioral Health Diagnosis Codes sourced from: <https://www.cms.gov/Medicare/Coding/ICD10/index.html>

2012 - 2015 Behavioral Health Diagnosis Codes sourced from: <https://www.cms.gov/Medicare/Coding/ICD9ProviderDiagnosticCodes/codes.html>

Source: 2012 - 2016 UB Data

Cumberland County

Distribution of Behavioral Health Patients in the Emergency Department by Age Behavioral Health Diagnosis Code in **Primary** Position

<u>Age</u>	<u>Calendar Year</u> <u>2012</u>	<u>Calendar Year</u> <u>2013</u>	<u>Calendar Year</u> <u>2014</u>	<u>Calendar Year</u> <u>2015</u>	<u>Calendar Year</u> <u>2016</u>
0 - 12 years (Child)	125	150	187	194	143
13 - 21 years (Adolescent)	526	514	588	592	524
22 - 54 years (Adult)	1,916	1,878	1,996	2,440	2,458
55 years + (Geriatric)	539	489	516	591	587
Total	3,106	3,031	3,287	3,817	3,712
Total Emergency Department Visits	72,503	71,610	71,298	73,970	60,241
% BH Volume of Total Volume	4.28%	4.23%	4.61%	5.16%	6.16%

Distribution of Behavioral Health Patients in the Emergency Department by Payer Mix Behavioral Health Diagnosis Code in **Primary** Position

<u>Payer Mix</u>	<u>Calendar Year</u> <u>2012</u>	<u>Calendar Year</u> <u>2013</u>	<u>Calendar Year</u> <u>2014</u>	<u>Calendar Year</u> <u>2015</u>	<u>Calendar Year</u> <u>2016</u>
Medicare - HMO & FFS	509	511	511	557	646
Medicaid - HMO & FFS	738	817	1,451	2,049	1,903
Blue Cross / Commercial	603	520	565	581	531
Charity Care / Uninsured	1,229	1,148	712	583	588
Other	27	35	48	47	44
Total	3,106	3,031	3,287	3,817	3,712

2016 Behavioral Health Diagnosis Codes sourced from: <https://www.cms.gov/Medicare/Coding/ICD10/index.html>

2012 - 2015 Behavioral Health Diagnosis Codes sourced from: <https://www.cms.gov/Medicare/Coding/ICD9ProviderDiagnosticCodes/codes.html>

Source: 2012 - 2016 UB Data

Essex County

Distribution of Behavioral Health Patients in the Emergency Department by Age Behavioral Health Diagnosis Code in **Primary** Position

<u>Age</u>	<u>Calendar Year</u> <u>2012</u>	<u>Calendar Year</u> <u>2013</u>	<u>Calendar Year</u> <u>2014</u>	<u>Calendar Year</u> <u>2015</u>	<u>Calendar Year</u> <u>2016</u>
0 - 12 years (Child)	636	804	721	944	915
13 - 21 years (Adolescent)	2,164	2,297	2,220	2,333	1,885
22 - 54 years (Adult)	10,317	10,262	9,522	10,950	7,997
55 years + (Geriatric)	2,280	2,504	2,670	3,288	2,270
Total	15,397	15,867	15,133	17,515	13,067
Total Emergency Department Visits	375,524	371,880	372,934	389,845	326,409
% BH Volume of Total Volume	4.10%	4.27%	4.06%	4.49%	4.00%

Distribution of Behavioral Health Patients in the Emergency Department by Payer Mix Behavioral Health Diagnosis Code in **Primary** Position

<u>Payer Mix</u>	<u>Calendar Year</u> <u>2012</u>	<u>Calendar Year</u> <u>2013</u>	<u>Calendar Year</u> <u>2014</u>	<u>Calendar Year</u> <u>2015</u>	<u>Calendar Year</u> <u>2016</u>
Medicare - HMO & FFS	1,669	1,690	1,881	2,079	1,412
Medicaid - HMO & FFS	2,003	2,275	3,726	5,576	4,393
Blue Cross / Commercial	4,934	5,167	4,707	5,464	4,171
Charity Care / Uninsured	6,676	6,617	4,711	4,294	2,995
Other	115	118	108	102	96
Total	15,397	15,867	15,133	17,515	13,067

2016 Behavioral Health Diagnosis Codes sourced from: <https://www.cms.gov/Medicare/Coding/ICD10/index.html>

2012 - 2015 Behavioral Health Diagnosis Codes sourced from: <https://www.cms.gov/Medicare/Coding/ICD9ProviderDiagnosticCodes/codes.html>

Source: 2012 - 2016 UB Data

Gloucester County

Distribution of Behavioral Health Patients in the Emergency Department by Age Behavioral Health Diagnosis Code in **Primary** Position

<u>Age</u>	<u>Calendar Year</u> <u>2012</u>	<u>Calendar Year</u> <u>2013</u>	<u>Calendar Year</u> <u>2014</u>	<u>Calendar Year</u> <u>2015</u>	<u>Calendar Year</u> <u>2016</u>
0 - 12 years (Child)	223	235	278	296	288
13 - 21 years (Adolescent)	1,249	1,220	1,209	1,360	1,360
22 - 54 years (Adult)	3,193	3,038	3,017	3,415	3,495
55 years + (Geriatric)	683	664	785	1,004	1,066
Total	5,348	5,157	5,289	6,075	6,209
Total Emergency Department Visits	103,259	98,518	101,466	103,262	100,140
% BH Volume of Total Volume	5.18%	5.23%	5.21%	5.88%	6.20%

Distribution of Behavioral Health Patients in the Emergency Department by Payer Mix Behavioral Health Diagnosis Code in **Primary** Position

<u>Payer Mix</u>	<u>Calendar Year</u> <u>2012</u>	<u>Calendar Year</u> <u>2013</u>	<u>Calendar Year</u> <u>2014</u>	<u>Calendar Year</u> <u>2015</u>	<u>Calendar Year</u> <u>2016</u>
Medicare - HMO & FFS	796	731	842	1,020	1,042
Medicaid - HMO & FFS	544	554	1,467	2,225	2,184
Blue Cross / Commercial	2,260	2,192	1,915	1,989	2,125
Charity Care / Uninsured	1,678	1,627	992	748	735
Other	70	53	73	93	123
Total	5,348	5,157	5,289	6,075	6,209

2016 Behavioral Health Diagnosis Codes sourced from: <https://www.cms.gov/Medicare/Coding/ICD10/index.html>

2012 - 2015 Behavioral Health Diagnosis Codes sourced from: <https://www.cms.gov/Medicare/Coding/ICD9ProviderDiagnosticCodes/codes.html>

Source: 2012 - 2016 UB Data

Hudson County

Distribution of Behavioral Health Patients in the Emergency Department by Age Behavioral Health Diagnosis Code in **Primary** Position

<u>Age</u>	<u>Calendar Year</u> <u>2012</u>	<u>Calendar Year</u> <u>2013</u>	<u>Calendar Year</u> <u>2014</u>	<u>Calendar Year</u> <u>2015</u>	<u>Calendar Year</u> <u>2016</u>
0 - 12 years (Child)	379	420	472	513	598
13 - 21 years (Adolescent)	1,458	1,295	1,414	1,526	1,427
22 - 54 years (Adult)	10,088	9,104	10,058	11,217	11,273
55 years + (Geriatric)	2,440	2,316	2,431	2,953	3,660
Total	14,365	13,135	14,375	16,209	16,958
Total Emergency Department Visits	205,386	166,596	178,243	211,370	216,043
% BH Volume of Total Volume	6.99%	7.88%	8.06%	7.67%	7.85%

Distribution of Behavioral Health Patients in the Emergency Department by Payer Mix Behavioral Health Diagnosis Code in **Primary** Position

<u>Payer Mix</u>	<u>Calendar Year</u> <u>2012</u>	<u>Calendar Year</u> <u>2013</u>	<u>Calendar Year</u> <u>2014</u>	<u>Calendar Year</u> <u>2015</u>	<u>Calendar Year</u> <u>2016</u>
Medicare - HMO & FFS	1,365	1,219	1,394	1,585	1,900
Medicaid - HMO & FFS	1,752	1,707	3,459	4,951	4,686
Blue Cross / Commercial	3,157	2,957	3,565	4,814	5,212
Charity Care / Uninsured	7,210	6,403	5,227	4,394	4,602
Other	881	849	730	465	558
Total	14,365	13,135	14,375	16,209	16,958

2016 Behavioral Health Diagnosis Codes sourced from: <https://www.cms.gov/Medicare/Coding/ICD10/index.html>

2012 - 2015 Behavioral Health Diagnosis Codes sourced from: <https://www.cms.gov/Medicare/Coding/ICD9ProviderDiagnosticCodes/codes.html>

Source: 2012 - 2016 UB Data

Hunterdon County

Distribution of Behavioral Health Patients in the Emergency Department by Age Behavioral Health Diagnosis Code in **Primary** Position

<u>Age</u>	<u>Calendar Year</u> <u>2012</u>	<u>Calendar Year</u> <u>2013</u>	<u>Calendar Year</u> <u>2014</u>	<u>Calendar Year</u> <u>2015</u>	<u>Calendar Year</u> <u>2016</u>
0 - 12 years (Child)	47	49	54	49	69
13 - 21 years (Adolescent)	410	358	442	415	428
22 - 54 years (Adult)	848	826	880	814	820
55 years + (Geriatric)	276	225	226	288	298
Total	1,581	1,458	1,602	1,566	1,615
Total Emergency Department Visits	27,143	25,879	27,017	27,128	27,364
% BH Volume of Total Volume	5.82%	5.63%	5.93%	5.77%	5.90%

Distribution of Behavioral Health Patients in the Emergency Department by Payer Mix Behavioral Health Diagnosis Code in **Primary** Position

<u>Payer Mix</u>	<u>Calendar Year</u> <u>2012</u>	<u>Calendar Year</u> <u>2013</u>	<u>Calendar Year</u> <u>2014</u>	<u>Calendar Year</u> <u>2015</u>	<u>Calendar Year</u> <u>2016</u>
Medicare - HMO & FFS		223	241	264	260
Medicaid - HMO & FFS		12	47	37	58
Blue Cross / Commercial		802	992	1,055	1,109
Charity Care / Uninsured		346	290	194	156
Other		75	32	16	32
Total	1,581	1,458	1,602	1,566	1,615

2016 Behavioral Health Diagnosis Codes sourced from: <https://www.cms.gov/Medicare/Coding/ICD10/index.html>

2012 - 2015 Behavioral Health Diagnosis Codes sourced from: <https://www.cms.gov/Medicare/Coding/ICD9ProviderDiagnosticCodes/codes.html>

Source: 2012 - 2016 UB Data

Mercer County

Distribution of Behavioral Health Patients in the Emergency Department by Age Behavioral Health Diagnosis Code in **Primary** Position

<u>Age</u>	<u>Calendar Year</u> <u>2012</u>	<u>Calendar Year</u> <u>2013</u>	<u>Calendar Year</u> <u>2014</u>	<u>Calendar Year</u> <u>2015</u>	<u>Calendar Year</u> <u>2016</u>
0 - 12 years (Child)	251	173	208	81	264
13 - 21 years (Adolescent)	1,607	1,049	875	516	1,067
22 - 54 years (Adult)	6,143	4,621	4,275	3,551	5,700
55 years + (Geriatric)	1,526	1,238	1,285	1,444	1,635
Total	9,527	7,081	6,643	5,592	8,666
Total Emergency Department Visits	181,541	150,013	154,168	157,763	159,493
% BH Volume of Total Volume	5.25%	4.72%	4.31%	3.54%	5.43%

Distribution of Behavioral Health Patients in the Emergency Department by Payer Mix Behavioral Health Diagnosis Code in **Primary** Position

<u>Payer Mix</u>	<u>Calendar Year</u> <u>2012</u>	<u>Calendar Year</u> <u>2013</u>	<u>Calendar Year</u> <u>2014</u>	<u>Calendar Year</u> <u>2015</u>	<u>Calendar Year</u> <u>2016</u>
Medicare - HMO & FFS	1,162	862	869	885	1,246
Medicaid - HMO & FFS	1,433	1,196	1,810	1,472	2,836
Blue Cross / Commercial	2,467	1,628	1,864	1,717	2,278
Charity Care / Uninsured	4,370	3,326	2,020	1,464	2,240
Other	95	69	80	54	66
Total	9,527	7,081	6,643	5,592	8,666

2016 Behavioral Health Diagnosis Codes sourced from: <https://www.cms.gov/Medicare/Coding/ICD10/index.html>

2012 - 2015 Behavioral Health Diagnosis Codes sourced from: <https://www.cms.gov/Medicare/Coding/ICD9ProviderDiagnosticCodes/codes.html>

Source: 2012 - 2016 UB Data

Middlesex County

Distribution of Behavioral Health Patients in the Emergency Department by Age Behavioral Health Diagnosis Code in **Primary** Position

<u>Age</u>	<u>Calendar Year</u> <u>2012</u>	<u>Calendar Year</u> <u>2013</u>	<u>Calendar Year</u> <u>2014</u>	<u>Calendar Year</u> <u>2015</u>	<u>Calendar Year</u> <u>2016</u>
0 - 12 years (Child)	301	362	358	339	318
13 - 21 years (Adolescent)	2,084	2,620	2,709	2,662	2,601
22 - 54 years (Adult)	6,865	8,100	8,270	8,911	8,901
55 years + (Geriatric)	1,600	2,016	2,142	2,290	2,352
Total	10,850	13,098	13,479	14,202	14,172
Total Emergency Department Visits	266,469	298,586	297,607	298,905	309,750
% BH Volume of Total Volume	4.07%	4.39%	4.53%	4.75%	4.58%

Distribution of Behavioral Health Patients in the Emergency Department by Payer Mix Behavioral Health Diagnosis Code in **Primary** Position

<u>Payer Mix</u>	<u>Calendar Year</u> <u>2012</u>	<u>Calendar Year</u> <u>2013</u>	<u>Calendar Year</u> <u>2014</u>	<u>Calendar Year</u> <u>2015</u>	<u>Calendar Year</u> <u>2016</u>
Medicare - HMO & FFS	1,465	1,673	1,584	1,923	1,772
Medicaid - HMO & FFS	1,420	1,802	3,126	4,116	4,323
Blue Cross / Commercial	3,429	4,271	4,292	4,496	4,335
Charity Care / Uninsured	4,337	5,152	4,279	3,449	3,525
Other	199	200	198	218	217
Total	10,850	13,098	13,479	14,202	14,172

2016 Behavioral Health Diagnosis Codes sourced from: <https://www.cms.gov/Medicare/Coding/ICD10/index.html>

2012 - 2015 Behavioral Health Diagnosis Codes sourced from: <https://www.cms.gov/Medicare/Coding/ICD9ProviderDiagnosticCodes/codes.html>

Source: 2012 - 2016 UB Data

Monmouth County

Distribution of Behavioral Health Patients in the Emergency Department by Age Behavioral Health Diagnosis Code in **Primary** Position

<u>Age</u>	<u>Calendar Year</u> <u>2012</u>	<u>Calendar Year</u> <u>2013</u>	<u>Calendar Year</u> <u>2014</u>	<u>Calendar Year</u> <u>2015</u>	<u>Calendar Year</u> <u>2016</u>
0 - 12 years (Child)	316	300	333	329	293
13 - 21 years (Adolescent)	2,026	1,914	1,814	2,012	1,863
22 - 54 years (Adult)	5,711	5,825	5,946	6,207	6,284
55 years + (Geriatric)	1,809	2,122	2,259	2,525	2,563
Total	9,862	10,161	10,352	11,073	11,003
Total Emergency Department Visits	223,854	219,526	219,507	224,357	223,755
% BH Volume of Total Volume	4.41%	4.63%	4.72%	4.94%	4.92%

Distribution of Behavioral Health Patients in the Emergency Department by Payer Mix Behavioral Health Diagnosis Code in **Primary** Position

<u>Payer Mix</u>	<u>Calendar Year</u> <u>2012</u>	<u>Calendar Year</u> <u>2013</u>	<u>Calendar Year</u> <u>2014</u>	<u>Calendar Year</u> <u>2015</u>	<u>Calendar Year</u> <u>2016</u>
Medicare - HMO & FFS	1,698	1,733	1,891	1,992	1,993
Medicaid - HMO & FFS	1,766	1,967	3,221	4,065	4,130
Blue Cross / Commercial	3,175	3,049	3,020	3,192	3,018
Charity Care / Uninsured	3,074	3,271	2,073	1,654	1,734
Other	149	141	147	170	128
Total	9,862	10,161	10,352	11,073	11,003

2016 Behavioral Health Diagnosis Codes sourced from: <https://www.cms.gov/Medicare/Coding/ICD10/index.html>

2012 - 2015 Behavioral Health Diagnosis Codes sourced from: <https://www.cms.gov/Medicare/Coding/ICD9ProviderDiagnosticCodes/codes.html>

Source: 2012 - 2016 UB Data

Morris County

Distribution of Behavioral Health Patients in the Emergency Department by Age Behavioral Health Diagnosis Code in **Primary** Position

<u>Age</u>	<u>Calendar Year</u> <u>2012</u>	<u>Calendar Year</u> <u>2013</u>	<u>Calendar Year</u> <u>2014</u>	<u>Calendar Year</u> <u>2015</u>	<u>Calendar Year</u> <u>2016</u>
0 - 12 years (Child)	392	399	419	386	286
13 - 21 years (Adolescent)	1,902	1,764	2,131	2,010	1,494
22 - 54 years (Adult)	3,833	3,638	4,442	4,525	3,670
55 years + (Geriatric)	1,169	1,274	1,644	1,596	1,466
Total	7,296	7,075	8,636	8,517	6,916
Total Emergency Department Visits	145,348	142,240	145,596	148,913	150,882
% BH Volume of Total Volume	5.02%	4.97%	5.93%	5.72%	4.58%

Distribution of Behavioral Health Patients in the Emergency Department by Payer Mix Behavioral Health Diagnosis Code in **Primary** Position

<u>Payer Mix</u>	<u>Calendar Year</u> <u>2012</u>	<u>Calendar Year</u> <u>2013</u>	<u>Calendar Year</u> <u>2014</u>	<u>Calendar Year</u> <u>2015</u>	<u>Calendar Year</u> <u>2016</u>
Medicare - HMO & FFS	1,024	1,059	1,390	1,312	1,139
Medicaid - HMO & FFS	357	314	689	918	817
Blue Cross / Commercial	4,665	4,329	4,655	4,846	3,775
Charity Care / Uninsured	1,142	1,269	1,755	1,256	1,026
Other	108	104	147	185	159
Total	7,296	7,075	8,636	8,517	6,916

2016 Behavioral Health Diagnosis Codes sourced from: <https://www.cms.gov/Medicare/Coding/ICD10/index.html>

2012 - 2015 Behavioral Health Diagnosis Codes sourced from: <https://www.cms.gov/Medicare/Coding/ICD9ProviderDiagnosticCodes/codes.html>

Source: 2012 - 2016 UB Data

Ocean County

Distribution of Behavioral Health Patients in the Emergency Department by Age Behavioral Health Diagnosis Code in **Primary** Position

<u>Age</u>	<u>Calendar Year</u> <u>2012</u>	<u>Calendar Year</u> <u>2013</u>	<u>Calendar Year</u> <u>2014</u>	<u>Calendar Year</u> <u>2015</u>	<u>Calendar Year</u> <u>2016</u>
0 - 12 years (Child)	236	276	250	284	272
13 - 21 years (Adolescent)	1,722	1,759	1,622	1,657	1,585
22 - 54 years (Adult)	6,050	5,929	5,971	6,151	6,376
55 years + (Geriatric)	2,363	2,429	2,425	2,669	2,680
Total	10,371	10,393	10,268	10,761	10,913
Total Emergency Department Visits	217,096	203,134	199,516	202,779	200,956
% BH Volume of Total Volume	4.78%	5.12%	5.15%	5.31%	5.43%

Distribution of Behavioral Health Patients in the Emergency Department by Payer Mix Behavioral Health Diagnosis Code in **Primary** Position

<u>Payer Mix</u>	<u>Calendar Year</u> <u>2012</u>	<u>Calendar Year</u> <u>2013</u>	<u>Calendar Year</u> <u>2014</u>	<u>Calendar Year</u> <u>2015</u>	<u>Calendar Year</u> <u>2016</u>
Medicare - HMO & FFS	2,461	2,555	2,657	2,757	2,706
Medicaid - HMO & FFS	1,776	1,885	3,076	3,953	4,253
Blue Cross / Commercial	2,885	2,658	2,505	2,543	2,493
Charity Care / Uninsured	3,112	3,202	1,903	1,390	1,359
Other	137	93	127	118	102
Total	10,371	10,393	10,268	10,761	10,913

2016 Behavioral Health Diagnosis Codes sourced from: <https://www.cms.gov/Medicare/Coding/ICD10/index.html>

2012 - 2015 Behavioral Health Diagnosis Codes sourced from: <https://www.cms.gov/Medicare/Coding/ICD9ProviderDiagnosticCodes/codes.html>

Source: 2012 - 2016 UB Data

Passaic County

Distribution of Behavioral Health Patients in the Emergency Department by Age Behavioral Health Diagnosis Code in **Primary** Position

<u>Age</u>	<u>Calendar Year</u> <u>2012</u>	<u>Calendar Year</u> <u>2013</u>	<u>Calendar Year</u> <u>2014</u>	<u>Calendar Year</u> <u>2015</u>	<u>Calendar Year</u> <u>2016</u>
0 - 12 years (Child)	417	409	414	487	478
13 - 21 years (Adolescent)	1,494	1,563	1,556	1,680	1,474
22 - 54 years (Adult)	5,438	5,602	5,871	6,299	5,834
55 years + (Geriatric)	1,252	1,522	1,705	1,645	1,721
Total	8,601	9,096	9,546	10,111	9,507
Total Emergency Department Visits	161,198	170,509	171,317	181,856	183,528
% BH Volume of Total Volume	5.34%	5.33%	5.57%	5.56%	5.18%

Distribution of Behavioral Health Patients in the Emergency Department by Payer Mix Behavioral Health Diagnosis Code in **Primary** Position

<u>Payer Mix</u>	<u>Calendar Year</u> <u>2012</u>	<u>Calendar Year</u> <u>2013</u>	<u>Calendar Year</u> <u>2014</u>	<u>Calendar Year</u> <u>2015</u>	<u>Calendar Year</u> <u>2016</u>
Medicare - HMO & FFS	847	1,013	1,098	1,113	1,017
Medicaid - HMO & FFS	2,381	2,317	3,685	5,090	4,831
Blue Cross / Commercial	1,489	1,653	1,711	1,515	1,419
Charity Care / Uninsured	3,812	4,047	2,994	2,314	2,154
Other	72	66	58	79	86
Total	8,601	9,096	9,546	10,111	9,507

2016 Behavioral Health Diagnosis Codes sourced from: <https://www.cms.gov/Medicare/Coding/ICD10/index.html>

2012 - 2015 Behavioral Health Diagnosis Codes sourced from: <https://www.cms.gov/Medicare/Coding/ICD9ProviderDiagnosticCodes/codes.html>

Source: 2012 - 2016 UB Data

Salem County

Distribution of Behavioral Health Patients in the Emergency Department by Age *Behavioral Health Diagnosis Code in **Primary** Position*

<u>Age</u>	<u>Calendar Year</u> <u>2012</u>	<u>Calendar Year</u> <u>2013</u>	<u>Calendar Year</u> <u>2014</u>	<u>Calendar Year</u> <u>2015</u>	<u>Calendar Year</u> <u>2016</u>
0 - 12 years (Child)	27	20	27	28	27
13 - 21 years (Adolescent)	193	187	179	181	201
22 - 54 years (Adult)	772	772	813	804	789
55 years + (Geriatric)	249	263	271	345	339
Total	1,241	1,242	1,290	1,358	1,356
Total Emergency Department Visits	35,670	34,389	35,410	36,674	37,137
% BH Volume of Total Volume	3.48%	3.61%	3.64%	3.70%	3.65%

Distribution of Behavioral Health Patients in the Emergency Department by Payer Mix *Behavioral Health Diagnosis Code in **Primary** Position*

<u>Payer Mix</u>	<u>Calendar Year</u> <u>2012</u>	<u>Calendar Year</u> <u>2013</u>	<u>Calendar Year</u> <u>2014</u>	<u>Calendar Year</u> <u>2015</u>	<u>Calendar Year</u> <u>2016</u>
Medicare - HMO & FFS	287		276	352	361
Medicaid - HMO & FFS	104		210	227	197
Blue Cross / Commercial	528		628	617	641
Charity Care / Uninsured	310		156	142	144
Other	12		20	20	13
Total	1,241	1,242	1,290	1,358	1,356

2016 Behavioral Health Diagnosis Codes sourced from: <https://www.cms.gov/Medicare/Coding/ICD10/index.html>

2012 - 2015 Behavioral Health Diagnosis Codes sourced from: <https://www.cms.gov/Medicare/Coding/ICD9ProviderDiagnosticCodes/codes.html>

Source: 2012 - 2016 UB Data

Somerset County

Distribution of Behavioral Health Patients in the Emergency Department by Age Behavioral Health Diagnosis Code in **Primary** Position

<u>Age</u>	<u>Calendar Year</u> <u>2012</u>	<u>Calendar Year</u> <u>2013</u>	<u>Calendar Year</u> <u>2014</u>	<u>Calendar Year</u> <u>2015</u>	<u>Calendar Year</u> <u>2016</u>
0 - 12 years (Child)	79	79	44	83	51
13 - 21 years (Adolescent)	511	427	255	449	458
22 - 54 years (Adult)	1,440	1,272	1,014	1,546	1,378
55 years + (Geriatric)	441	356	294	508	500
Total	2,471	2,134	1,607	2,586	2,387
Total Emergency Department Visits	41,317	39,865	40,041	43,086	43,082
% BH Volume of Total Volume	5.98%	5.35%	4.01%	6.00%	5.54%

Distribution of Behavioral Health Patients in the Emergency Department by Payer Mix Behavioral Health Diagnosis Code in **Primary** Position

<u>Payer Mix</u>	<u>Calendar Year</u> <u>2012</u>	<u>Calendar Year</u> <u>2013</u>	<u>Calendar Year</u> <u>2014</u>	<u>Calendar Year</u> <u>2015</u>	<u>Calendar Year</u> <u>2016</u>
Medicare - HMO & FFS	451	363	272	483	442
Medicaid - HMO & FFS	414	349	390	276	522
Blue Cross / Commercial	895	733	571	1,351	998
Charity Care / Uninsured	671	659	347	450	411
Other	40	30	27	26	14
Total	2,471	2,134	1,607	2,586	2,387

2016 Behavioral Health Diagnosis Codes sourced from: <https://www.cms.gov/Medicare/Coding/ICD10/index.html>

2012 - 2015 Behavioral Health Diagnosis Codes sourced from: <https://www.cms.gov/Medicare/Coding/ICD9ProviderDiagnosticCodes/codes.html>

Source: 2012 - 2016 UB Data

Sussex County

Distribution of Behavioral Health Patients in the Emergency Department by Age Behavioral Health Diagnosis Code in **Primary** Position

<u>Age</u>	<u>Calendar Year</u> <u>2012</u>	<u>Calendar Year</u> <u>2013</u>	<u>Calendar Year</u> <u>2014</u>	<u>Calendar Year</u> <u>2015</u>	<u>Calendar Year</u> <u>2016</u>
0 - 12 years (Child)	74	88	89	108	92
13 - 21 years (Adolescent)	528	453	475	447	458
22 - 54 years (Adult)	1,112	938	1,013	1,075	1,226
55 years + (Geriatric)	273	237	315	291	353
Total	1,987	1,716	1,892	1,921	2,129
Total Emergency Department Visits	28,547	23,208	28,081	30,695	33,164
% BH Volume of Total Volume	6.96%	7.39%	6.74%	6.26%	6.42%

Distribution of Behavioral Health Patients in the Emergency Department by Payer Mix Behavioral Health Diagnosis Code in **Primary** Position

<u>Payer Mix</u>	<u>Calendar Year</u> <u>2012</u>	<u>Calendar Year</u> <u>2013</u>	<u>Calendar Year</u> <u>2014</u>	<u>Calendar Year</u> <u>2015</u>	<u>Calendar Year</u> <u>2016</u>
Medicare - HMO & FFS	285	305	295	350	375
Medicaid - HMO & FFS	155	160	340	361	350
Blue Cross / Commercial	1,001	826	1,010	1,018	1,155
Charity Care / Uninsured	479	376	205	145	167
Other	67	49	42	47	82
Total	1,987	1,716	1,892	1,921	2,129

2016 Behavioral Health Diagnosis Codes sourced from: <https://www.cms.gov/Medicare/Coding/ICD10/index.html>

2012 - 2015 Behavioral Health Diagnosis Codes sourced from: <https://www.cms.gov/Medicare/Coding/ICD9ProviderDiagnosticCodes/codes.html>

Source: 2012 - 2016 UB Data

Union County

Distribution of Behavioral Health Patients in the Emergency Department by Age Behavioral Health Diagnosis Code in **Primary** Position

<u>Age</u>	<u>Calendar Year</u> <u>2012</u>	<u>Calendar Year</u> <u>2013</u>	<u>Calendar Year</u> <u>2014</u>	<u>Calendar Year</u> <u>2015</u>	<u>Calendar Year</u> <u>2016</u>
0 - 12 years (Child)	560	519	503	452	499
13 - 21 years (Adolescent)	1,577	1,555	1,620	1,516	1,563
22 - 54 years (Adult)	5,429	5,595	5,298	5,822	6,465
55 years + (Geriatric)	1,379	1,663	1,866	2,378	2,210
Total	8,945	9,332	9,287	10,168	10,737
Total Emergency Department Visits	161,870	165,988	170,599	176,724	180,327
% BH Volume of Total Volume	5.53%	5.62%	5.44%	5.75%	5.95%

Distribution of Behavioral Health Patients in the Emergency Department by Payer Mix Behavioral Health Diagnosis Code in **Primary** Position

<u>Payer Mix</u>	<u>Calendar Year</u> <u>2012</u>	<u>Calendar Year</u> <u>2013</u>	<u>Calendar Year</u> <u>2014</u>	<u>Calendar Year</u> <u>2015</u>	<u>Calendar Year</u> <u>2016</u>
Medicare - HMO & FFS	1,112	1,190	1,324	1,461	1,471
Medicaid - HMO & FFS	1,741	1,712	2,970	3,891	4,148
Blue Cross / Commercial	2,387	2,481	2,374	2,659	2,634
Charity Care / Uninsured	3,520	3,809	2,484	1,997	2,324
Other	185	140	135	160	160
Total	8,945	9,332	9,287	10,168	10,737

2016 Behavioral Health Diagnosis Codes sourced from: <https://www.cms.gov/Medicare/Coding/ICD10/index.html>

2012 - 2015 Behavioral Health Diagnosis Codes sourced from: <https://www.cms.gov/Medicare/Coding/ICD9ProviderDiagnosticCodes/codes.html>

Source: 2012 - 2016 UB Data

Warren County

Distribution of Behavioral Health Patients in the Emergency Department by Age Behavioral Health Diagnosis Code in **Primary** Position

<u>Age</u>	<u>Calendar Year</u> <u>2012</u>	<u>Calendar Year</u> <u>2013</u>	<u>Calendar Year</u> <u>2014</u>	<u>Calendar Year</u> <u>2015</u>	<u>Calendar Year</u> <u>2016</u>
0 - 12 years (Child)	46	59	51	55	63
13 - 21 years (Adolescent)	305	271	286	287	269
22 - 54 years (Adult)	872	768	789	1,017	907
55 years + (Geriatric)	267	239	245	293	327
Total	1,490	1,337	1,371	1,652	1,566
Total Emergency Department Visits	42,769	41,496	40,372	40,998	39,155
% BH Volume of Total Volume	3.48%	3.22%	3.40%	4.03%	4.00%

Distribution of Behavioral Health Patients in the Emergency Department by Payer Mix Behavioral Health Diagnosis Code in **Primary** Position

<u>Payer Mix</u>	<u>Calendar Year</u> <u>2012</u>	<u>Calendar Year</u> <u>2013</u>	<u>Calendar Year</u> <u>2014</u>	<u>Calendar Year</u> <u>2015</u>	<u>Calendar Year</u> <u>2016</u>
Medicare - HMO & FFS	302	245	257	297	312
Medicaid - HMO & FFS	267	251	403	625	589
Blue Cross / Commercial	511	435	440	484	472
Charity Care / Uninsured	370	384	248	224	158
Other	40	22	23	22	35
Total	1,490	1,337	1,371	1,652	1,566

2016 Behavioral Health Diagnosis Codes sourced from: <https://www.cms.gov/Medicare/Coding/ICD10/index.html>

2012 - 2015 Behavioral Health Diagnosis Codes sourced from: <https://www.cms.gov/Medicare/Coding/ICD9ProviderDiagnosticCodes/codes.html>

Source: 2012 - 2016 UB Data



Distribution by Age

Distribution by Payer Mix

**Inpatient Admission
Mental Health or Substance
Use Disorder Diagnosis Codes
in *Primary* or *Any* Position**

*Statewide and County
2012 - 2016*



Statewide

Total Inpatient Volume:

948,291

Distribution of Behavioral Health Patients by Age and Position of Behavioral Health Diagnosis Code

<u>Age</u>	<u>Inpatient</u>	
	<u>Behavioral Health DX in Primary Position</u>	<u>Behavioral Health DX in Any Position</u>
0 - 12 years (Child)	1,177	3,193
13 - 21 years (Adolescent)	7,496	12,327
22 - 54 years (Adult)	45,924	122,146
55 years + (Geriatric)	13,561	165,924
Total	68,158	303,590
% BH Volume of Total Volume	7.19%	32.01%

Distribution of Behavioral Health Patients by Payer Mix and Position of Behavioral Health Diagnosis Code

<u>Payer Mix</u>	<u>Inpatient</u>	
	<u>Behavioral Health DX in Primary Position</u>	<u>Behavioral Health DX in Any Position</u>
Medicare - HMO & FFS	13,354	137,011
Medicaid - HMO & FFS	35,070	71,737
Blue Cross / Commercial	13,410	73,250
Charity Care / Uninsured	5,627	14,740
Other	697	6,852
Total	68,158	303,590

Behavioral Health Diagnosis Codes sourced from: <https://www.cms.gov/Medicare/Coding/ICD10/index.html>

Source: 2016 UB Data



Atlantic County

Total Inpatient Volume:

38,764

Distribution of Behavioral Health Patients by Age and Position of Behavioral Health Diagnosis Code

<u>Age</u>	<u>Inpatient</u>	
	<u>Behavioral Health DX in Primary Position</u>	<u>Behavioral Health DX in Any Position</u>
0 - 12 years (Child)		39
13 - 21 years (Adolescent)		363
22 - 54 years (Adult)		6,366
55 years + (Geriatric)		7,269
Total	3,053	14,037
% BH Volume of Total Volume	7.88%	36.21%

Distribution of Behavioral Health Patients by Payer Mix and Position of Behavioral Health Diagnosis Code

<u>Payer Mix</u>	<u>Inpatient</u>	
	<u>Behavioral Health DX in Primary Position</u>	<u>Behavioral Health DX in Any Position</u>
Medicare - HMO & FFS	572	5,974
Medicaid - HMO & FFS	1,956	4,657
Blue Cross / Commercial	351	2,413
Charity Care / Uninsured	137	544
Other	37	449
Total	3,053	14,037

Behavioral Health Diagnosis Codes sourced from: <https://www.cms.gov/Medicare/Coding/ICD10/index.html>

Source: 2016 UB Data



Bergen County

Total Inpatient Volume:

117,244

Distribution of Behavioral Health Patients by Age and Position of Behavioral Health Diagnosis Code

<u>Age</u>	<u>Inpatient</u>	
	<u>Behavioral Health DX in Primary Position</u>	<u>Behavioral Health DX in Any Position</u>
0 - 12 years (Child)	109	467
13 - 21 years (Adolescent)	953	1,448
22 - 54 years (Adult)	11,109	16,859
55 years + (Geriatric)	2,653	18,549
Total	14,824	37,323
% BH Volume of Total Volume	12.64%	31.83%

Distribution of Behavioral Health Patients by Payer Mix and Position of Behavioral Health Diagnosis Code

<u>Payer Mix</u>	<u>Inpatient</u>	
	<u>Behavioral Health DX in Primary Position</u>	<u>Behavioral Health DX in Any Position</u>
Medicare - HMO & FFS	2,449	15,189
Medicaid - HMO & FFS	9,344	10,949
Blue Cross / Commercial	1,651	7,452
Charity Care / Uninsured	1,198	1,911
Other	182	1,822
Total	14,824	37,323

Behavioral Health Diagnosis Codes sourced from: <https://www.cms.gov/Medicare/Coding/ICD10/index.html>

Source: 2016 UB Data



Burlington County

Total Inpatient Volume:

38,081

Distribution of Behavioral Health Patients by Age and Position of Behavioral Health Diagnosis Code

<u>Age</u>	<u>Inpatient</u>	
	<u>Behavioral Health DX in Primary Position</u>	<u>Behavioral Health DX in Any Position</u>
0 - 12 years (Child)	0	15
13 - 21 years (Adolescent)	114	283
22 - 54 years (Adult)	1,589	5,523
55 years + (Geriatric)	539	8,365
Total	2,242	14,186
% BH Volume of Total Volume	5.89%	37.25%

Distribution of Behavioral Health Patients by Payer Mix and Position of Behavioral Health Diagnosis Code

<u>Payer Mix</u>	<u>Inpatient</u>	
	<u>Behavioral Health DX in Primary Position</u>	<u>Behavioral Health DX in Any Position</u>
Medicare - HMO & FFS	542	6,863
Medicaid - HMO & FFS	1,172	2,781
Blue Cross / Commercial	356	3,438
Charity Care / Uninsured	111	521
Other	61	583
Total	2,242	14,186

Behavioral Health Diagnosis Codes sourced from: <https://www.cms.gov/Medicare/Coding/ICD10/index.html>

Source: 2016 UB Data



Camden County

Total Inpatient Volume:

84,568

Distribution of Behavioral Health Patients by Age and Position of Behavioral Health Diagnosis Code

<u>Age</u>	<u>Inpatient</u>	
	<u>Behavioral Health DX in Primary Position</u>	<u>Behavioral Health DX in Any Position</u>
0 - 12 years (Child)	107	306
13 - 21 years (Adolescent)	491	1,152
22 - 54 years (Adult)	2,175	12,341
55 years + (Geriatric)	707	15,028
Total	3,480	28,827
% BH Volume of Total Volume	4.12%	34.09%

Distribution of Behavioral Health Patients by Payer Mix and Position of Behavioral Health Diagnosis Code

<u>Payer Mix</u>	<u>Inpatient</u>	
	<u>Behavioral Health DX in Primary Position</u>	<u>Behavioral Health DX in Any Position</u>
Medicare - HMO & FFS	690	12,452
Medicaid - HMO & FFS	1,658	7,369
Blue Cross / Commercial	874	7,259
Charity Care / Uninsured	229	1,035
Other	29	712
Total	3,480	28,827

Behavioral Health Diagnosis Codes sourced from: <https://www.cms.gov/Medicare/Coding/ICD10/index.html>

Source: 2016 UB Data



Cape May County

Total Inpatient Volume:

7,141

Distribution of Behavioral Health Patients by Age and Position of Behavioral Health Diagnosis Code

<u>Age</u>	<u>Inpatient</u>	
	<u>Behavioral Health DX in Primary Position</u>	<u>Behavioral Health DX in Any Position</u>
0 - 12 years (Child)		
13 - 21 years (Adolescent)		
22 - 54 years (Adult)		
55 years + (Geriatric)		
Total	37	2,488
% BH Volume of Total Volume	0.52%	34.84%

Distribution of Behavioral Health Patients by Payer Mix and Position of Behavioral Health Diagnosis Code

<u>Payer Mix</u>	<u>Inpatient</u>	
	<u>Behavioral Health DX in Primary Position</u>	<u>Behavioral Health DX in Any Position</u>
Medicare - HMO & FFS		1,451
Medicaid - HMO & FFS		571
Blue Cross / Commercial		399
Charity Care / Uninsured		33
Other		34
Total	37	2,488

Behavioral Health Diagnosis Codes sourced from: <https://www.cms.gov/Medicare/Coding/ICD10/index.html>

Source: 2016 UB Data



Cumberland County

Total Inpatient Volume:

18,438

Distribution of Behavioral Health Patients by Age and Position of Behavioral Health Diagnosis Code

<u>Age</u>	<u>Inpatient</u>	
	<u>Behavioral Health DX in Primary Position</u>	<u>Behavioral Health DX in Any Position</u>
0 - 12 years (Child)	155	166
13 - 21 years (Adolescent)	468	572
22 - 54 years (Adult)	943	3,438
55 years + (Geriatric)	260	4,190
Total	1,826	8,366
% BH Volume of Total Volume	9.90%	45.37%

Distribution of Behavioral Health Patients by Payer Mix and Position of Behavioral Health Diagnosis Code

<u>Payer Mix</u>	<u>Inpatient</u>	
	<u>Behavioral Health DX in Primary Position</u>	<u>Behavioral Health DX in Any Position</u>
Medicare - HMO & FFS	316	3,841
Medicaid - HMO & FFS	999	2,565
Blue Cross / Commercial	327	1,286
Charity Care / Uninsured	162	472
Other	22	202
Total	1,826	8,366

Behavioral Health Diagnosis Codes sourced from: <https://www.cms.gov/Medicare/Coding/ICD10/index.html>

Source: 2016 UB Data



Essex County

Total Inpatient Volume:

94,241

Distribution of Behavioral Health Patients by Age and Position of Behavioral Health Diagnosis Code

<u>Age</u>	<u>Inpatient</u>	
	<u>Behavioral Health DX in Primary Position</u>	<u>Behavioral Health DX in Any Position</u>
0 - 12 years (Child)	172	657
13 - 21 years (Adolescent)	719	1,396
22 - 54 years (Adult)	3,709	11,544
55 years + (Geriatric)	1,268	11,701
Total	5,868	25,298
% BH Volume of Total Volume	6.23%	26.84%

Distribution of Behavioral Health Patients by Payer Mix and Position of Behavioral Health Diagnosis Code

<u>Payer Mix</u>	<u>Inpatient</u>	
	<u>Behavioral Health DX in Primary Position</u>	<u>Behavioral Health DX in Any Position</u>
Medicare - HMO & FFS	1,225	8,735
Medicaid - HMO & FFS	2,990	7,503
Blue Cross / Commercial	1,011	7,055
Charity Care / Uninsured	613	1,676
Other	29	329
Total	5,868	25,298

Behavioral Health Diagnosis Codes sourced from: <https://www.cms.gov/Medicare/Coding/ICD10/index.html>

Source: 2016 UB Data



Gloucester County

Total Inpatient Volume:

24,734

Distribution of Behavioral Health Patients by Age and Position of Behavioral Health Diagnosis Code

<u>Age</u>	<u>Inpatient</u>	
	<u>Behavioral Health DX in Primary Position</u>	<u>Behavioral Health DX in Any Position</u>
0 - 12 years (Child)	0	
13 - 21 years (Adolescent)	84	
22 - 54 years (Adult)	796	
55 years + (Geriatric)	226	
Total	1,106	7,568
% BH Volume of Total Volume	4.47%	30.60%

Distribution of Behavioral Health Patients by Payer Mix and Position of Behavioral Health Diagnosis Code

<u>Payer Mix</u>	<u>Inpatient</u>	
	<u>Behavioral Health DX in Primary Position</u>	<u>Behavioral Health DX in Any Position</u>
Medicare - HMO & FFS		4,377
Medicaid - HMO & FFS		1,168
Blue Cross / Commercial		1,542
Charity Care / Uninsured		360
Other		121
Total	1,106	7,568

Behavioral Health Diagnosis Codes sourced from: <https://www.cms.gov/Medicare/Coding/ICD10/index.html>

Source: 2016 UB Data



Hudson County

Total Inpatient Volume:

48,601

Distribution of Behavioral Health Patients by Age and Position of Behavioral Health Diagnosis Code

<u>Age</u>	<u>Inpatient</u>	
	<u>Behavioral Health DX in Primary Position</u>	<u>Behavioral Health DX in Any Position</u>
0 - 12 years (Child)	110	146
13 - 21 years (Adolescent)	676	812
22 - 54 years (Adult)	3,319	7,153
55 years + (Geriatric)	1,047	8,594
Total	5,152	16,705
% BH Volume of Total Volume	10.60%	34.37%

Distribution of Behavioral Health Patients by Payer Mix and Position of Behavioral Health Diagnosis Code

<u>Payer Mix</u>	<u>Inpatient</u>	
	<u>Behavioral Health DX in Primary Position</u>	<u>Behavioral Health DX in Any Position</u>
Medicare - HMO & FFS	965	6,806
Medicaid - HMO & FFS	2,863	4,744
Blue Cross / Commercial	741	3,611
Charity Care / Uninsured	550	1,358
Other	33	186
Total	5,152	16,705

Behavioral Health Diagnosis Codes sourced from: <https://www.cms.gov/Medicare/Coding/ICD10/index.html>

Source: 2016 UB Data



Hunterdon County

Total Inpatient Volume:

9,213

Distribution of Behavioral Health Patients by Age and Position of Behavioral Health Diagnosis Code

<u>Age</u>	<u>Inpatient</u>	
	<u>Behavioral Health DX in Primary Position</u>	<u>Behavioral Health DX in Any Position</u>
0 - 12 years (Child)	0	
13 - 21 years (Adolescent)	39	
22 - 54 years (Adult)	477	
55 years + (Geriatric)	188	
Total	704	3,154
% BH Volume of Total Volume	7.64%	34.23%

Distribution of Behavioral Health Patients by Payer Mix and Position of Behavioral Health Diagnosis Code

<u>Payer Mix</u>	<u>Inpatient</u>	
	<u>Behavioral Health DX in Primary Position</u>	<u>Behavioral Health DX in Any Position</u>
Medicare - HMO & FFS	146	1,528
Medicaid - HMO & FFS	238	292
Blue Cross / Commercial	238	1,154
Charity Care / Uninsured	55	128
Other	27	52
Total	704	3,154

Behavioral Health Diagnosis Codes sourced from: <https://www.cms.gov/Medicare/Coding/ICD10/index.html>

Source: 2016 UB Data



Mercer County

Total Inpatient Volume:

34,919

Distribution of Behavioral Health Patients by Age and Position of Behavioral Health Diagnosis Code

<u>Age</u>	<u>Inpatient</u>	
	<u>Behavioral Health DX in Primary Position</u>	<u>Behavioral Health DX in Any Position</u>
0 - 12 years (Child)		12
13 - 21 years (Adolescent)		265
22 - 54 years (Adult)		5,062
55 years + (Geriatric)		6,217
Total	1,950	11,556
% BH Volume of Total Volume	5.58%	33.09%

Distribution of Behavioral Health Patients by Payer Mix and Position of Behavioral Health Diagnosis Code

<u>Payer Mix</u>	<u>Inpatient</u>	
	<u>Behavioral Health DX in Primary Position</u>	<u>Behavioral Health DX in Any Position</u>
Medicare - HMO & FFS		5,077
Medicaid - HMO & FFS		2,612
Blue Cross / Commercial		2,878
Charity Care / Uninsured		795
Other		194
Total	1,950	11,556

Behavioral Health Diagnosis Codes sourced from: <https://www.cms.gov/Medicare/Coding/ICD10/index.html>

Source: 2016 UB Data



Middlesex County

Total Inpatient Volume:

109,057

Distribution of Behavioral Health Patients by Age and Position of Behavioral Health Diagnosis Code

<u>Age</u>	<u>Inpatient</u>	
	<u>Behavioral Health DX in Primary Position</u>	<u>Behavioral Health DX in Any Position</u>
0 - 12 years (Child)	51	445
13 - 21 years (Adolescent)	564	1,161
22 - 54 years (Adult)	4,313	10,465
55 years + (Geriatric)	1,107	13,934
Total	6,035	26,005
% BH Volume of Total Volume	5.53%	23.85%

Distribution of Behavioral Health Patients by Payer Mix and Position of Behavioral Health Diagnosis Code

<u>Payer Mix</u>	<u>Inpatient</u>	
	<u>Behavioral Health DX in Primary Position</u>	<u>Behavioral Health DX in Any Position</u>
Medicare - HMO & FFS	1,051	11,015
Medicaid - HMO & FFS	2,755	5,523
Blue Cross / Commercial	1,742	7,811
Charity Care / Uninsured	441	1,289
Other	46	367
Total	6,035	26,005

Behavioral Health Diagnosis Codes sourced from: <https://www.cms.gov/Medicare/Coding/ICD10/index.html>

Source: 2016 UB Data



Monmouth County

Total Inpatient Volume:

82,129

Distribution of Behavioral Health Patients by Age and Position of Behavioral Health Diagnosis Code

<u>Age</u>	<u>Inpatient</u>	
	<u>Behavioral Health DX in Primary Position</u>	<u>Behavioral Health DX in Any Position</u>
0 - 12 years (Child)	183	312
13 - 21 years (Adolescent)	1,110	1,497
22 - 54 years (Adult)	4,213	9,955
55 years + (Geriatric)	1,357	15,192
Total	6,863	26,956
% BH Volume of Total Volume	8.36%	32.82%

Distribution of Behavioral Health Patients by Payer Mix and Position of Behavioral Health Diagnosis Code

<u>Payer Mix</u>	<u>Inpatient</u>	
	<u>Behavioral Health DX in Primary Position</u>	<u>Behavioral Health DX in Any Position</u>
Medicare - HMO & FFS	1,525	13,496
Medicaid - HMO & FFS	2,933	5,737
Blue Cross / Commercial	1,771	6,079
Charity Care / Uninsured	573	1,139
Other	61	505
Total	6,863	26,956

Behavioral Health Diagnosis Codes sourced from: <https://www.cms.gov/Medicare/Coding/ICD10/index.html>

Source: 2016 UB Data



Morris County

Total Inpatient Volume:

67,428

Distribution of Behavioral Health Patients by Age and Position of Behavioral Health Diagnosis Code

<u>Age</u>	<u>Inpatient</u>	
	<u>Behavioral Health DX in Primary Position</u>	<u>Behavioral Health DX in Any Position</u>
0 - 12 years (Child)	141	264
13 - 21 years (Adolescent)	873	1,265
22 - 54 years (Adult)	2,877	7,922
55 years + (Geriatric)	915	12,667
Total	4,806	22,118
% BH Volume of Total Volume	7.13%	32.80%

Distribution of Behavioral Health Patients by Payer Mix and Position of Behavioral Health Diagnosis Code

<u>Payer Mix</u>	<u>Inpatient</u>	
	<u>Behavioral Health DX in Primary Position</u>	<u>Behavioral Health DX in Any Position</u>
Medicare - HMO & FFS	730	9,751
Medicaid - HMO & FFS	2,020	2,915
Blue Cross / Commercial	1,733	8,154
Charity Care / Uninsured	275	685
Other	48	613
Total	4,806	22,118

Behavioral Health Diagnosis Codes sourced from: <https://www.cms.gov/Medicare/Coding/ICD10/index.html>

Source: 2016 UB Data



Ocean County

Total Inpatient Volume:

50,542

Distribution of Behavioral Health Patients by Age and Position of Behavioral Health Diagnosis Code

<u>Age</u>	<u>Inpatient</u>	
	<u>Behavioral Health DX in Primary Position</u>	<u>Behavioral Health DX in Any Position</u>
0 - 12 years (Child)		16
13 - 21 years (Adolescent)		320
22 - 54 years (Adult)		5,993
55 years + (Geriatric)		12,375
Total	3,021	18,704
% BH Volume of Total Volume	5.98%	37.01%

Distribution of Behavioral Health Patients by Payer Mix and Position of Behavioral Health Diagnosis Code

<u>Payer Mix</u>	<u>Inpatient</u>	
	<u>Behavioral Health DX in Primary Position</u>	<u>Behavioral Health DX in Any Position</u>
Medicare - HMO & FFS	654	11,394
Medicaid - HMO & FFS	1,779	3,907
Blue Cross / Commercial	412	2,757
Charity Care / Uninsured	158	480
Other	18	166
Total	3,021	18,704

Behavioral Health Diagnosis Codes sourced from: <https://www.cms.gov/Medicare/Coding/ICD10/index.html>

Source: 2016 UB Data



Passaic County

Total Inpatient Volume:

41,569

Distribution of Behavioral Health Patients by Age and Position of Behavioral Health Diagnosis Code

<u>Age</u>	<u>Inpatient</u>	
	<u>Behavioral Health DX in Primary Position</u>	<u>Behavioral Health DX in Any Position</u>
0 - 12 years (Child)		161
13 - 21 years (Adolescent)		371
22 - 54 years (Adult)		4,320
55 years + (Geriatric)		6,525
Total	1,379	11,377
% BH Volume of Total Volume	3.32%	27.37%

Distribution of Behavioral Health Patients by Payer Mix and Position of Behavioral Health Diagnosis Code

<u>Payer Mix</u>	<u>Inpatient</u>	
	<u>Behavioral Health DX in Primary Position</u>	<u>Behavioral Health DX in Any Position</u>
Medicare - HMO & FFS		4,707
Medicaid - HMO & FFS		3,529
Blue Cross / Commercial		2,058
Charity Care / Uninsured		941
Other		142
Total	1,379	11,377

Behavioral Health Diagnosis Codes sourced from: <https://www.cms.gov/Medicare/Coding/ICD10/index.html>

Source: 2016 UB Data



Salem County

Total Inpatient Volume:

7,166

Distribution of Behavioral Health Patients by Age and Position of Behavioral Health Diagnosis Code

<u>Age</u>	<u>Inpatient</u>	
	<u>Behavioral Health DX in Primary Position</u>	<u>Behavioral Health DX in Any Position</u>
0 - 12 years (Child)	0	
13 - 21 years (Adolescent)	0	
22 - 54 years (Adult)	33	
55 years + (Geriatric)	52	
Total	85	2,997
% BH Volume of Total Volume	1.19%	41.82%

Distribution of Behavioral Health Patients by Payer Mix and Position of Behavioral Health Diagnosis Code

<u>Payer Mix</u>	<u>Inpatient</u>	
	<u>Behavioral Health DX in Primary Position</u>	<u>Behavioral Health DX in Any Position</u>
Medicare - HMO & FFS		1,698
Medicaid - HMO & FFS		249
Blue Cross / Commercial		890
Charity Care / Uninsured		138
Other		22
Total	85	2,997

Behavioral Health Diagnosis Codes sourced from: <https://www.cms.gov/Medicare/Coding/ICD10/index.html>

Source: 2016 UB Data



Somerset County

Total Inpatient Volume:

13,916

Distribution of Behavioral Health Patients by Age and Position of Behavioral Health Diagnosis Code

<u>Age</u>	<u>Inpatient</u>	
	<u>Behavioral Health DX in Primary Position</u>	<u>Behavioral Health DX in Any Position</u>
0 - 12 years (Child)	0	0
13 - 21 years (Adolescent)	128	173
22 - 54 years (Adult)	706	1,932
55 years + (Geriatric)	190	3,280
Total	1,024	5,385
% BH Volume of Total Volume	7.36%	38.70%

Distribution of Behavioral Health Patients by Payer Mix and Position of Behavioral Health Diagnosis Code

<u>Payer Mix</u>	<u>Inpatient</u>	
	<u>Behavioral Health DX in Primary Position</u>	<u>Behavioral Health DX in Any Position</u>
Medicare - HMO & FFS		2,560
Medicaid - HMO & FFS		523
Blue Cross / Commercial		1,895
Charity Care / Uninsured		386
Other		21
Total	1,024	5,385

Behavioral Health Diagnosis Codes sourced from: <https://www.cms.gov/Medicare/Coding/ICD10/index.html>

Source: 2016 UB Data



Sussex County

Total Inpatient Volume:

8,095

Distribution of Behavioral Health Patients by Age and Position of Behavioral Health Diagnosis Code

<u>Age</u>	<u>Inpatient</u>	
	<u>Behavioral Health DX in Primary Position</u>	<u>Behavioral Health DX in Any Position</u>
0 - 12 years (Child)	0	0
13 - 21 years (Adolescent)	52	78
22 - 54 years (Adult)	443	1,241
55 years + (Geriatric)	157	2,007
Total	652	3,326
% BH Volume of Total Volume	8.05%	41.09%

Distribution of Behavioral Health Patients by Payer Mix and Position of Behavioral Health Diagnosis Code

<u>Payer Mix</u>	<u>Inpatient</u>	
	<u>Behavioral Health DX in Primary Position</u>	<u>Behavioral Health DX in Any Position</u>
Medicare - HMO & FFS	160	1,763
Medicaid - HMO & FFS	259	436
Blue Cross / Commercial	197	969
Charity Care / Uninsured	22	83
Other	14	75
Total	652	3,326

Behavioral Health Diagnosis Codes sourced from: <https://www.cms.gov/Medicare/Coding/ICD10/index.html>

Source: 2016 UB Data



Union County

Total Inpatient Volume:

45,337

Distribution of Behavioral Health Patients by Age and Position of Behavioral Health Diagnosis Code

<u>Age</u>	<u>Inpatient</u>	
	<u>Behavioral Health DX in Primary Position</u>	<u>Behavioral Health DX in Any Position</u>
0 - 12 years (Child)	140	175
13 - 21 years (Adolescent)	685	846
22 - 54 years (Adult)	2,291	5,454
55 years + (Geriatric)	855	7,804
Total	3,971	14,279
% BH Volume of Total Volume	8.76%	31.50%

Distribution of Behavioral Health Patients by Payer Mix and Position of Behavioral Health Diagnosis Code

<u>Payer Mix</u>	<u>Inpatient</u>	
	<u>Behavioral Health DX in Primary Position</u>	<u>Behavioral Health DX in Any Position</u>
Medicare - HMO & FFS	988	6,482
Medicaid - HMO & FFS	1,660	3,258
Blue Cross / Commercial	953	3,618
Charity Care / Uninsured	309	689
Other	61	232
Total	3,971	14,279

Behavioral Health Diagnosis Codes sourced from: <https://www.cms.gov/Medicare/Coding/ICD10/index.html>

Source: 2016 UB Data



Warren County

Total Inpatient Volume:

7,108

Distribution of Behavioral Health Patients by Age and Position of Behavioral Health Diagnosis Code

<u>Age</u>	<u>Inpatient</u>	
	<u>Behavioral Health DX in Primary Position</u>	<u>Behavioral Health DX in Any Position</u>
0 - 12 years (Child)		
13 - 21 years (Adolescent)		
22 - 54 years (Adult)		
55 years + (Geriatric)		
Total	80	2,935
% BH Volume of Total Volume	1.13%	41.29%

Distribution of Behavioral Health Patients by Payer Mix and Position of Behavioral Health Diagnosis Code

<u>Payer Mix</u>	<u>Inpatient</u>	
	<u>Behavioral Health DX in Primary Position</u>	<u>Behavioral Health DX in Any Position</u>
Medicare - HMO & FFS		1,852
Medicaid - HMO & FFS		449
Blue Cross / Commercial		532
Charity Care / Uninsured		77
Other		25
Total	80	2,935

Behavioral Health Diagnosis Codes sourced from: <https://www.cms.gov/Medicare/Coding/ICD10/index.html>

Source: 2016 UB Data

