

Call for Nominations

NEW JERSEY HOSPITAL ASSOCIATION
2015 AWARD OPPORTUNITIES

- **NJHA HEALTHCARE LEADER AWARDS**
- **NJHA EXCELLENCE IN QUALITY IMPROVEMENT AWARDS**
- **HRET COMMUNITY OUTREACH AWARDS**

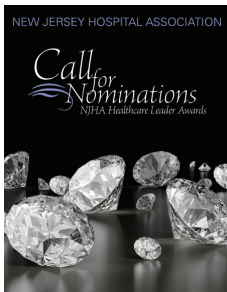
Call for Nominations

NEW JERSEY HOSPITAL ASSOCIATION
2015 AWARD OPPORTUNITIES



New Jersey hospitals and healthcare institutions are dedicated to providing the finest healthcare services and programs to New Jersey residents. In recognition of those efforts, each year the New Jersey Hospital Association and its Health Research and Educational Trust (HRET) honor several individuals and institutions for their exemplary commitment and programs designed to achieve that goal.

Nominations for the 2015 NJHA Healthcare Leader, Excellence in Quality Improvement and HRET Community Outreach awards are now being accepted. Specific award criteria and nominating information for each award is below.



NJHA HEALTHCARE LEADER AWARDS

NJHA's Healthcare Leader Awards recognize the contributions of individual healthcare leaders. Whether an executive, member of the board, physician, nurse, clinician or member of the medical staff, the Healthcare Leader Awards recognize individuals' outstanding leadership, knowledge, compassion and experience to their hospital or healthcare facility and the patients they serve.

Each award recipient is honored at NJHA's Annual Meeting with a personalized tribute video.

CRITERIA

DISTINGUISHED SERVICE AWARD

Nominees must be executive leaders with more than 15 years of combined service to a NJHA member hospital or healthcare system in New Jersey. Nominees have demonstrated strength, integrity, professionalism and a relentless commitment to the hospital or healthcare system, and are active in both NJHA and other industry groups.

HOSPITAL OR HEALTHCARE SYSTEM TRUSTEE OF THE YEAR AWARD

Nominees must be NJHA member hospital or healthcare system trustee volunteers who have demonstrated exceptional leadership, guidance and commitment to the hospital, system and community. Through public involvement at the community, state and/or national level, nominees must be strong advocates, participate in active decision-making and strategic thinking to anticipate demands of the healthcare marketplace and demonstrate a commitment to fostering positive relationships among the board, the medical staff, the community and the administration.

HEALTHCARE PROFESSIONAL OF THE YEAR AWARD

Nominees must be a healthcare professional from an NJHA member institution whose performance is considered exemplary by both peers and patients. Nominees demonstrate leadership, dedication and support to the industry, as well as possess qualities of altruism, sincerity, respect and compassion for their patients and their families; they go above and beyond their normal duties.

Nominees may include physicians, nurses, physician's assistants, nurse practitioners or any other allied healthcare professional.

Please note: Nominations must be supported by the institution's chief executive officer and additional information or further follow-up with the CEO may be required by the nominating committee.

NOMINATION REQUIREMENTS

All nominations must include a one-page narrative supporting the nomination.

For additional information, please contact NJHA's Debbie Furchak at dfurchak@njha.com or 609-275-4072.



NJHA EXCELLENCE IN QUALITY IMPROVEMENT AWARDS

The NJHA Excellence in Quality Improvement Awards recognize healthcare organizations that are working to improve performance and enhance quality, patient safety and satisfaction with care. One award is presented to an acute care facility and one award to post-acute facility.

CRITERIA

Acute care programs or hospitals must be accredited by The Joint Commission, DNV or AOA. Post-acute care programs can have no deficiencies above Level G within the last 12 months, if a nursing home. Home health agencies, rehabilitation and long term acute care facilities must be accredited by TJC or other national accrediting organization.

Nominations are open to all NJHA members and only **one program** per institution may be nominated.

PROGRAMS WILL BE CONSIDERED IN FIVE CATEGORIES:

- ◆ Disparities in patient care
- ◆ Communications and language barriers with diverse populations
- ◆ Partnership for Patients Initiative
- ◆ Patient-centered care
- ◆ Patient safety

All nominated programs must have been implemented during the period Jan. 1, 2014, through the present, or at least have been active during this period if implemented prior to Jan. 1.

The program must be evidence-based, cost effective and have the potential to be replicated.

Nominations must include outcomes data and budget details.

NOMINATION REQUIREMENTS

SUMMARY (300 word max.) Provide a brief summary of the program that includes the population served, major activities to meet identified needs and a description of outcomes and impact.

PROGRAM DESCRIPTION (500 word max.) Provide a program description including: design, strategies and accomplishments; how needs and resources were identified; primary goal and specific objectives; how the program was implemented; overall cost effectiveness.

PROGRAM AND OUTCOMES DATA (300 word max.) Provide a program evaluation, including data on outcomes, number of people served and quantifiable improvements in patient care.

REPLICABILITY AND SUSTAINABILITY (300 word max.) Provide a program summary of replicability and sustainability.

BUDGET/OPERATING EXPENSES (300 word max.) Provide an overview of operating expenses for 2014.

For additional information, please contact NJHA's Aline Holmes at aholmes@njha.com or 609-275-4157.



HRET COMMUNITY OUTREACH AWARDS

NJHA, through its Health Research and Educational Trust of New Jersey, recognizes hospitals and healthcare institutions for their collaborative efforts and programs that identify, create and support innovative programs to meet specific needs, improve health status and enhance quality of life.

CRITERIA

Entries will be accepted from NJHA member institutions in the following categories:

- ◆ Preventing Disease and Injury
- ◆ Enhancing Access and Quality of Care to Reduce Disparities
- ◆ Improving Nutrition and Wellbeing

(Please select one category that best fits the program)

All programs should focus on eliminating barriers to care, such as cultural, communication and literacy barriers. Different population categories may be the target of health improvement interventions. These include: children, the elderly or those with special needs, including indigent, minorities, women, patients with disabilities, addictions or specific diseases such as cancer, HIV/AIDS or chronic conditions.

Short term or one-day programs and special events are not eligible.

Programs must have been implemented during the period Jan. 1, 2014, through the present or been active during this period if implemented before Jan. 1. Previous entries may be resubmitted if the program is still in progress.

Programs meeting award criteria can be submitted regardless of source of funding and may include grant-funded programs.

NOMINATION REQUIREMENTS

ABSTRACT (300 word max.) Provide a brief summary of the program, including the population it serves (size, geographic location, primary social and healthcare needs it addresses, etc.), community partnership, list of major activities to meet the identified needs and description of their outcomes and impact.

PURPOSE/SCOPE OF PROGRAM (200 word max.) Describe the needs and barriers faced by the specific population targeted by the program including how these needs were identified by the program's primary goals and objectives. Include the social significance and anticipated impact on health status of the community.

TARGETED POPULATIONS (100 word max.) Describe characteristics of the targeted population.

PROGRAM DESIGN & IMPLEMENTATION (350 word max.) Describe the program's design, implementation, integration in the community and sustainability. Include strategies used to remove

the barriers as well as how community partners' resources/assets were utilized.

EVALUATION (250 word max.) Provide data on the program's success, such as the number of people served, number of visits, quantifiable improvements in health status and overall cost effectiveness. Include how the outcomes and effectiveness of the program are measured.

PARTNERS/COLLABORATORS (150 word max.) Provide names of all partnering organizations including name, title and phone of primary contact for the top three critical partners.

BUDGET/EXPENSES (200 word max.) Provide total operating expenses for the most recently completed fiscal year and itemized list of major funding sources. Failure to include a budget will significantly impact a program's evaluation and score.

For additional information please contact HRET's Kim Hewitson at khewitson@njha.com or call 609-275-4145.

ALL AWARDS

DEADLINE AND NOMINATION SUBMISSION

All award nominations **must be submitted online no later than September 5 to be considered.** To submit a nomination, log on to www.njha.com/awards, select the award you are nominating and follow the prompts.

Please note: a member log in and password are no longer required. However, all nominations must be from member institutions; all others will not be considered.

JUDGING & NOTIFICATION

An expert panels of judges with extensive background in each award area will review the nominations and select the award recipients. All award recipients will be notified in November.

AWARDS PRESENTATION

All awards will be presented at NJHA's 96th Annual Meeting and Luncheon to be held Friday, Jan. 30, 2015, at the Hyatt Regency Princeton.